



University of
Wisconsin-Stout
Wisconsin's Polytechnic University

Campus Update

2024-2025



3x

Labs & Studios
as Traditional
Classrooms

1,000+

Paid /Unpaid
Internships
Throughout the U.S.

99%

Employed or
Continuing
Education

100%

Graduate with
Applied-Learning
Experience



Applied Learning & Research



3x

Campus Labs & Studios as Traditional Classrooms

Business & Industry Collaboration



700+

Industry Co-op, Internship & Research Partners

Career-Focused Experiences



99%

Near-Perfect Employment for the Past 15 Years

Undergraduate Programs

50+ Majors
(15+ Online)

70+ Minors

Graduate Programs

25+ Master's & Advanced Degrees

Certificates

40 Professional Certificates
(30+ Online)

Triple Threat Graduates = Academic Degree + Experiential Learning + Professional Credential/License

Awards & Certifications



Malcolm Baldrige
National Quality Award
2001 Award Recipient

First and Only Four-Year Institution Recipient



Only USDLA "Quality-Certified Institution" in Wisconsin

Industry Collaborations



Blue Devil Athletics



20 NCAA Sports

11 NCAA All-American Athletes*
(2023-2024)

Only UW System Sports Program Rated "Gender Equal" (ChampionWomen)

First Varsity eSports Program in the UW System

* As of April 11, 2024

Impact & Sustainability

Annual Economic Impact
(2020 Emsi Study)

\$306.2M in Income to the UW-Stout Service Area

4,600+ Jobs Supported

Campus Sustainability Efforts

2018 Campus-Wide
\$1.5M LED Lighting Retrofit

\$165K+ Total Focus On Energy® Incentives



6,938

2023 Fall Student Enrollment



35%

First-Generation College Students

Inspiring Instructors

99% of classes are taught by faculty and academic staff. Our instructors actively advise students on academics and post-graduation placement.

Learning Snapshot

18:1

Student/Faculty Ratio

404

Teaching Faculty & Staff

23

Average Lecture Class

18

Average Lab Sections

22/35

Average Student Age (UG/GR)



50+

Undergraduate Degrees



70+

Minors



20+

Graduate Degrees



40

Professional Certificates



3x

Labs & Studios Than Traditional Classrooms



Only Laptop+ Campus

in the UW System and a Leader in Open Educational Resources

Select Program Rankings

- #1** Best **Computer Programming and Networking Management** School in Wisconsin (*Computer Science Schools*)
- #1** Best **Construction Management** Schools in the Great Lakes Region (*College Factual*)
- #1** Highest Paid Grads in **Electrical & Computer Engineering** (*College Factual*)
- #1** Best Value **Engineering-Related Fields** Schools in the Great Lakes Region (*College Factual*)
- #1** Top Schools in Wisconsin for **Game Design** (*Animation Career Review*)
- #1** Best Undergraduate **Game Design** Programs in Wisconsin (*Princeton Review*)
- #1** Best Value **Hospitality Management** Schools in the Great Lakes Region (*College Factual*)
- #1** Best Value **Interior Design** Schools (*College Factual*)
- #1** Best Value Colleges for **Manufacturing Engineering** in the Great Lakes Region (*College Factual*)
- #1** Best Value **Mechanical Engineering** Schools in Wisconsin (*College Factual*)
- #1** Best Value **Polymer & Plastics Engineering** Schools (*Course Advisor*)
- #1** Best Value **Subject-Specific Teacher Education** Schools in Wisconsin (*College Factual*)

Campus Visits

To register for a visit, students may call the admissions office at 715-232-1411 or sign up online at uwstout.edu/Visit.

Weekday Campus Visits

In-person and virtual visits are available Monday-Friday. Visits run two hours and start at 9:00 a.m. and 1:00 p.m.

Academic Visits

Monday–Thursday we have academic visits devoted to the student’s career cluster of interest. Students receive an overview of majors within the career cluster, take a tour and then have an academic experience. This could include a meeting with a professor, a departmental tour or meeting a student program ambassador.

Campus Preview Days/Stout Saturdays

These visits include an informational fair where students learn about housing, dining and life on campus; an admissions overview; a student panel and a student-guided walking tour. Campus Preview Days also include an academic expo and facility tours.

FALL 2024

- Saturday, October 5
- Friday, October 11
- Thursday, October 17
- Friday, October 18
- Saturday, October 19
- Friday, November 1
- Friday, November 8
- Saturday, November 9

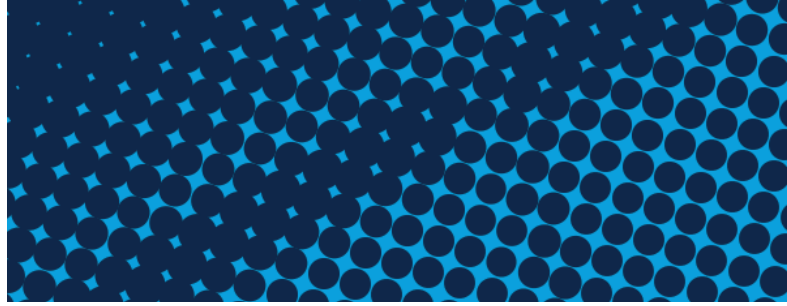
SPRING 2025

- Friday, March 28
- Saturday, March 29
- Friday, April 11
- Friday, April 25
- Saturday, April 26

Admitted Student Days

For admitted students still deciding if UW-Stout is the right fit. Students will explore more about UW-Stout to make a final college decision and complete next enrollment steps.

- Monday, February 17
- Friday, March 7
- Friday, April 4



Request a School Visit

We would like to connect with your students! Contact your admissions counselor and they will coordinate a visit with you!

We Can Come to You!

We are available for in-person or virtual special events, classroom presentations, small group discussions or individual one-on-one meetings.

You Can Come to Us!

Schedule a field trip to UW-Stout and bring a group of students to experience first-hand what Stout has to offer! Reserve your date by emailing groupvisits@uwstout.edu.

Degree Programs at UW-Stout

Our 50+ industry-aligned undergraduate majors and 70+ minors prepare graduates to do more in their careers from day one. Many of our polytechnic programs are unique to UW-Stout or offered nowhere else in the Midwest.

- Art, Design & Graphics
- Business & Management
- Education
- Human & Social Sciences
- Information Technology & Communications
- Science, Engineering & Math

Popular Majors

- Applied Science
- Business Administration
- Computer Science
- Early Childhood Education
- Mechanical Engineering
- Psychology

Unique Majors

- Cybersecurity
- Fashion Design & Development
- Game Design & Development
- Packaging
- Video Production
- Hotel, Restaurant & Tourism Management

New Programs

- BS Biology
- BS Chemistry
- BS Physics
- BFA Illustration

View our complete list of majors at uwstout.edu/programs.

Admission Information

Requirements for 2025-2026

- No application fee
- ACT/SAT score optional
- No essay

Credit Requirements:

4 English, 3 Math, 3 Social Science, 3 Science, and 4 Elective

Math Requirements: Geometry, Algebra I and Algebra II
A fourth year is strongly encouraged for STEM majors; statistics can count as third year of math for admission.

World Language: Not required

Program Requirements:

All majors are direct entry for first-year students except art majors. First-year B.F.A. art majors are admitted as Pre-B.F.A. and apply into the major spring semester of their first year.

How to Apply

UW-Stout reviews applications using a holistic approach.

Students must submit the following:

- UW Application **OR** Common App
- High School Transcript

Next Steps for Admitted Students

Upon admission, students receive a text message (if opted in), email, and mailed letter with the exciting news!

View next enrollment steps on our admitted student checklist at uwstout.edu/Future-Blue-Devil.

Direct Admission

UW-Stout is a participant in the Direct Admit Wisconsin program. Please encourage students to opt in and to complete the Direct Admit form to accept their admission offer to UW-Stout.

For more information, visit uwstout.edu/Direct-Admission



99% Employed or Continuing Education



86% Graduates Hired in Wisconsin



\$58K Average Starting Salary

Scholarships

UW-Stout awards \$2M+ in scholarships to incoming and continuing students. These awards include Admissions scholarships (merit-based and several others), as well as Stout University Foundation Scholarships.

For more information, visit uwstout.edu/Scholarships.



Meet the Admissions Team

Students can schedule a one-on-one meeting with their admissions counselor by using the booking links below.



Joan Bellesbach

Director of Admissions
Call: 715-232-2276
bellesbachj@uwstout.edu



Darren Ward

Associate Director
of Admissions
Call or Text: 715-232-1787
warddar@uwstout.edu
Booking Link:
uwstout.edu/darren



Lacey Seefeldt

Interim Assistant Director of
Admissions
Call: 715-232-2088
Text: 715-602-8088
seefeldtl@uwstout.edu
Booking Link:
uwstout.edu/lacey



Brianna Banks

First-Year Admissions
Counselor - Southern MN
Call or Text: 715-232-4067
banksb@uwstout.edu
Booking Link:
uwstout.edu/brianna



Nou Lor

First-Year Admissions Counselor -
Eastern WI
Call or Text: 715-232-5149
lorno@uwstout.edu
Booking Link:
uwstout.edu/nou



Rich Church

First-Year Admissions Counselor -
Southern WI & Illinois
Call or Text: 715-232-5225
churchr@uwstout.edu
Booking Link:
uwstout.edu/rich



Coua Xiong

First-Year Admissions Counselor -
Northern MN
Call or Text: 715-232-5188
xiongco@uwstout.edu
Booking Link:
uwstout.edu/coua



Abbie Hartung

First-Year Admissions Counselor -
Western WI
Call or Text: 715-232-3199
hartungab@uwstout.edu
Booking Link:
uwstout.edu/abbie



Jeanie Albricht

First-Year Admissions Counselor -
Group Visit Coordinator
Call or Text: 715-232-2555
albrichtje@uwstout.edu
Booking Link:
uwstout.edu/jeanie



Mollie Ficek

Transfer Admissions Counselor
Call or Text: 715-232-5467
ficekm@uwstout.edu
Booking Link:
uwstout.edu/mollie



Linda Otto

Visit & Office Coordinator
Call or Text: 715-232-1411
campusvisits@uwstout.edu

Contact Us

UWStoutADM

admissions@uwstout.edu

UWStout

715-232-1232

UWStoutPics & uwstoutadmissions

715-602-8088

Learn More

UWStout.edu/Admissions



University of
Wisconsin-Stout
Wisconsin's Polytechnic University