



# YOUR JOURNEY BEGINS

INTRODUCTION TO THE  
UNIVERSITY OF WISCONSIN SYSTEM  
2017-18



# TABLE OF CONTENTS

- 4 CAMPUS PROFILES
- 20 PLANNING FOR ADMISSION
- 22 ADMISSION GUIDELINES
- 32 APPLYING FOR ADMISSION
- 33 MAJORS





**34** UNDERGRADUATE PROGRAMS

**40** PAYING FOR COLLEGE

**43** WHO'S ON CAMPUS

**44** CAMPUS CONTACTS

APPLY ONLINE TO ANY UW CAMPUS  
**APPLY.WISCONSIN.EDU**

---

Published by UW HELP  
University of Wisconsin System  
Call or text 800-442-6459  
[uwhelp.wisconsin.edu](http://uwhelp.wisconsin.edu) | [uwhelp@uwex.edu](mailto:uwhelp@uwex.edu)











# 26

DESTINATIONS  
TO BEGIN YOUR  
JOURNEY

UNIVERSITY OF

# UW COLLEGES

UWC.EDU

**At the thirteen freshman-sophomore campuses of the University of Wisconsin Colleges, we understand there's more than one path to a college degree and a fulfilling career.**

Our intimate campus communities are built on ensuring your success. You'll find a supportive academic environment with small class sizes, hands-on advising, and dedicated faculty. You can start hundreds of majors and potential careers that allow you to explore your interests, and with our engaging campus culture, you'll get help every step of the way.

When you begin at a local UW Colleges campus, you're also creating opportunities. Save thousands of dollars paying the lowest tuition in the University of Wisconsin System. Build connections by playing a sport, joining a club, or conducting research with your professors. And with our Guaranteed Transfer Program with every four-year UW campus, you can be confident you'll hit the ground running on the next step of your educational journey.

A successful future starts with you. Start your path to a better life with UW Colleges.

**Enrollment:** 12,033 | **Toll-Free:** 888-INFO-UWC  
**Campus Tours:** Call or email the campus of your choice.



## UW COLLEGES CAMPUSES

**UW Colleges Admissions Office**  
780 Regent St., Madison, WI 53715-2635  
UWCSolutionCenter@uwc.edu | uwc.edu  
Toll-free: 888-INFO-UWC (888-463-6892)

**UW-Baraboo/Sauk County**  
1006 Connie Rd., Baraboo, WI 53913-1015  
barabooinfo@uwc.edu | baraboo.uwc.edu  
608-355-5230

**UW-Barron County**  
1800 College Dr., Rice Lake, WI 54868-2497  
uwbinfo@uwc.edu | barron.uwc.edu  
715-234-8176

**UW-Fond du Lac**  
400 University Dr., Fond du Lac, WI 54935-2950  
fdlinfo@uwc.edu | fdl.uwc.edu  
920-929-1122

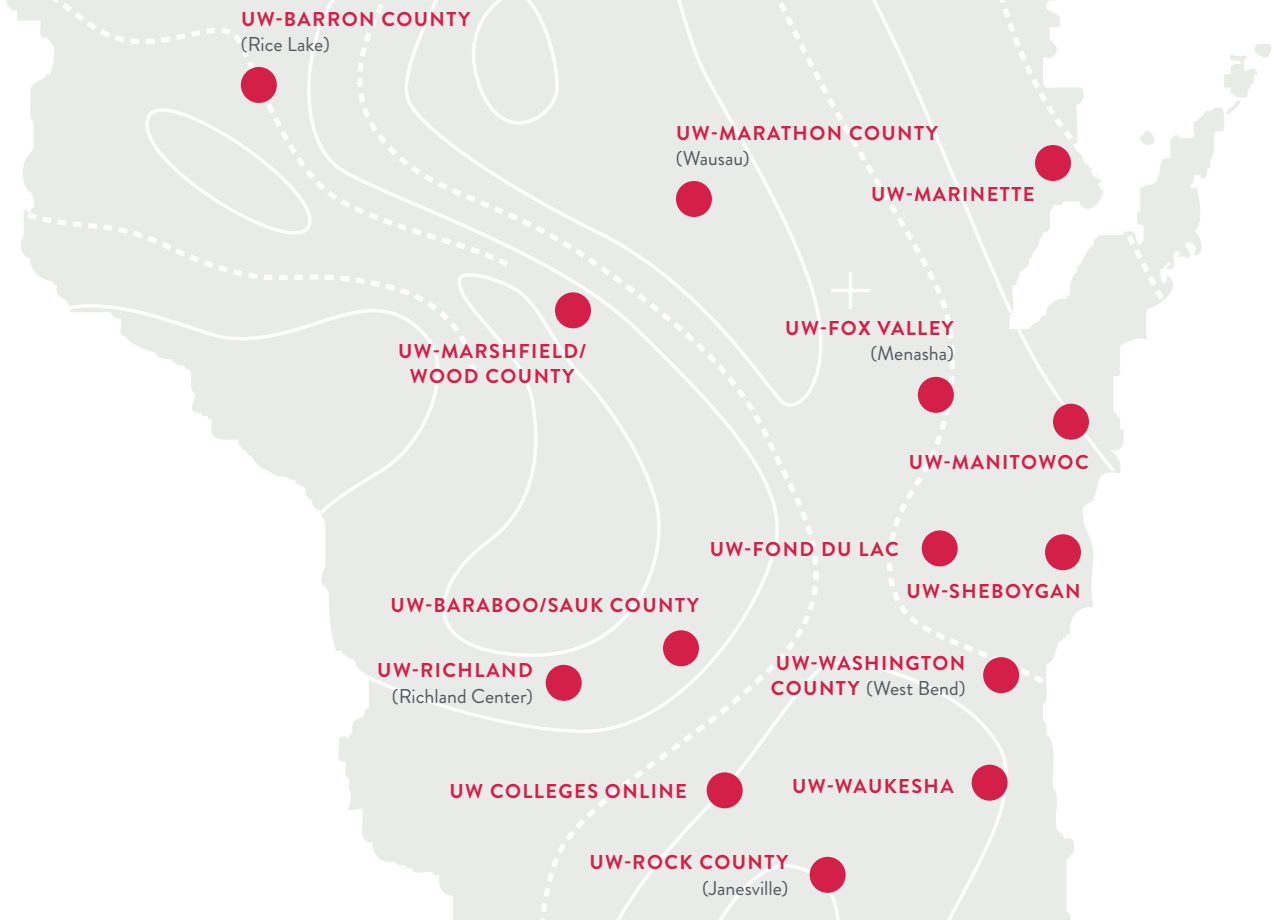
**UW-Fox Valley**  
1478 Midway Rd., Menasha, WI 54952-1224  
foxinfo@uwc.edu | uwfox.uwc.edu  
920-832-2620

**UW-Manitowoc**  
705 Viebahn St., Manitowoc, WI 54220-6699  
maninfo@uwc.edu | uwmanitowoc.uwc.edu  
920-683-4707

**UW-Marathon County**  
518 S. 7th Ave., Wausau, WI 54401-5396  
uwmc@uwc.edu | uwmc.uwc.edu  
Toll-free: 888-FOR-UWMC | 715-261-6235



# UW COLLEGES CAMPUSES



#### **UW-Marquette**

750 W. Bay Shore St., Marquette, WI 54143-4253  
ssinfo@uwc.edu | marquette.uwc.edu  
715-735-4301

#### **UW-Marshfield/Wood County**

2000 W. 5th St., Marshfield, WI 54449-3310  
msfadm@uwc.edu | marshfield.uwc.edu  
715-389-6530

#### **UW-Richland**

1200 Hwy. 14 West  
Richland Center, WI 53581-1316  
rlinfo@uwc.edu | richland.uwc.edu  
608-647-6186

#### **UW-Rock County**

2909 Kellogg Ave., Janesville, WI 53546-5699  
rckinfo@uwc.edu | rock.uwc.edu  
608-758-6565 ext. 200

#### **UW-Sheboygan**

One University Dr., Sheboygan, WI 53081-4760  
uwshb@uwc.edu | sheboygan.uwc.edu  
920-459-6633

#### **UW-Washington County**

400 University Dr., West Bend, WI 53095-3699  
wsh-info@uwc.edu | washington.uwc.edu  
262-335-5201

#### **UW-Waukesha**

1500 N. University Dr., Waukesha, WI 53188-2799  
wakin@uwc.edu | waukesha.uwc.edu  
262-521-5041

#### **UW Colleges Online**

34 Schroeder Ct., Suite 200  
Madison, WI 53711-2525  
uwonlinesupport@uwc.edu | online.uwc.edu  
Toll-free: 877-449-1877

# UW-EAU CLAIRE

UWEC.EDU | ADMISSIONS@UWEC.EDU

**Discover your AND at UW-Eau Claire through quality academics, relationships with exceptional faculty, life-changing opportunities outside of the classroom, and involvement in the vibrant campus community.**

You will become globally engaged, ready to be an active and responsible citizen of the world, through diverse cultural experiences on campus, nationally, and abroad. Nearly 85 percent of students have at least two study abroad, internship, service-learning, or immersion experiences, or conduct research with a faculty member.

Blugolds are prepared to find well-paying jobs in their fields, or conduct research with a faculty member with abundant opportunities to master leadership skills and get résumé-building experiences. We'll get you out of the classroom and into the field, where you can explore, gain confidence, and meet experts and thought leaders. And when you're not exploring your academic passions, you'll make connections and have a blast by joining several of the 250+ student organizations and 50+ recreational teams.

**The journey you take discovering your AND will poise you for success not only at your first job, but also throughout your life.**



**Enrollment:** 9,981

**City:** Eau Claire

**Population:** 164,000 (metro)

**City website:** [visiteau Claire.com](http://visiteau Claire.com)



**Campus Tours:** Typically Mon – Fri,  
10 a.m. and 1 p.m.

**Group Visit Days:**  
[uwec.ly/groupvisit](http://uwec.ly/groupvisit)



# UW-GREEN BAY

UWGB.EDU | UWGB@UWGB.EDU



## UW-Green Bay takes a unique approach in preparing you for the world that awaits.

You will learn to look at complex problems from multiple perspectives and disciplines—a skill set that’s in high demand by employers today. And you’ll do all of this in a beautiful, bay view setting that’s both serene and inspiring...and close to all the urban amenities of the state’s third largest city.

Here you can be involved in meaningful, hands-on learning, internships, faculty research, and an active study abroad program.

### New programs include:

- BSN in Nursing
- Engineering Technology: Electrical, Environmental, and Mechanical (*new in 2015*)
- Game Studies
- Supply Chain Management

You will graduate from UW-Green Bay poised for success: 98 percent of UW-Green Bay graduates are either employed, seeking further education, or serving in the military one year after graduation.

**If you’re looking for a place that allows you to do more, see more, and achieve more, the University of Wisconsin-Green Bay is a smart place to be.**



**Enrollment:** 7,030  
**City:** Green Bay  
**Population:** 250,000  
**City website:** [greenbay.com](http://greenbay.com)



**Campus Tours:** Mon – Fri, 9 a.m. and 1:30 p.m.  
**Preview Days:** 2017: 10/6, 10/20, 10/27, 11/10  
2018: 3/30, 4/13  
**Campus Preview Days, Major Open Houses, Evening and Saturday Visits:** [uwgb.edu/visit](http://uwgb.edu/visit)

# UW-LA CROSSE

UWLAX.EDU | ADMISSIONS@UWLAX.EDU

## Embark on your path to a successful future at UW-La Crosse.

Experience innovative academics along Wisconsin's beautiful west coast! You'll see why we rank among stellar Midwest universities and are a Kiplinger's top value. We're:

**Welcoming** — Nestled around towering bluffs and meandering rivers, La Crosse is the region's cultural hub.

**Driven** — Enhance your education through stimulating academic, social, and cultural experiences.

**Engaged** — Discover small class sizes and awesome faculty who engage students in and out of class.

**Active** — Be part of an involved, active campus. Be inspired along new paths.

These fine qualities lead to high retention rates and strong graduation rates. Our students aren't only successful on campus—they also find lasting careers.

Challenge yourself in a historic community offering a diverse, global environment. Study, intern, or research overseas.

Enjoy life in a relaxed college town. Look for bald eagles soaring overhead and listen for nostalgic riverboat whistles. You'll feel right at home.

**Discover for yourself. Whether trekking the La Crosse River marsh or hiking the bluffs, your path runs through UW-La Crosse!**



**Enrollment:** 10,546

**City:** La Crosse

**Population:** 51,320; Metro: 136,985

**City website:** [explorelacrosse.com](http://explorelacrosse.com)



**Campus Tours:** [uwlax.edu/visit](http://uwlax.edu/visit)

**Campus Close-Ups:**

2017: 10/20, 10/27, 11/10

2018: 2/16, 4/27





# UW-MADISON

WISC.EDU | [ONWISCONSIN@ADMISSIONS.WISC.EDU](mailto:ONWISCONSIN@ADMISSIONS.WISC.EDU)



**For more than a century, UW-Madison has been guided by a simple yet profound principle. It's called the Wisconsin Idea.**

It charges us to push beyond the boundaries of the classroom and share our knowledge with the state, nation, and world.

Every day, UW-Madison students contribute to the university's world-class status. We're recognized as the 10th-best public university nationally (U.S. News & World Report) and 25th-best university internationally (Center for World University Rankings). And we're a research powerhouse, ranking among the top universities in research spending. But we make time for fun, too. Just ask the NCAA, which named Madison the No. 1 college football town in America. (Jump Around!) At UW-Madison, opportunities match your boundless imagination: 4,700+ courses, 140+ majors, and 900+ student organizations. With 40,000 peers and an average class size of 30 students, the university can be as big or small as you make it.

**Your journey begins here. Join us and help turn the Wisconsin Idea into a reality.**



**Enrollment:** 43,338

**City:** Madison

**Population:** 243,344

**City website:** [visitmadison.com](http://visitmadison.com)



**Campus Tours:** [visitbucky.wisc.edu](http://visitbucky.wisc.edu)

Search by date and make reservations for Admissions Information and Walking Tours

# UW-MILWAUKEE

UWM.EDU | UNDERGRADUATEADMISSIONS@UWM.EDU

**UWM prepares its graduates for the world. As a Milwaukee Panther, choose from more than 80 majors, 20 languages, and 280 clubs. Education, finance, marketing, nursing, and psychology are among UWM's most popular programs.**

Recognized as a "Best in the Midwest" university by the Princeton Review, UWM combines quality teaching, hands-on experience working alongside faculty members on research projects, and big-city culture. UWM was named one of America's top 115 research universities in 2016.

Learning doesn't stop when you leave the laboratory or classroom. Milwaukee is the best place to network for internships, volunteer opportunities, and jobs. UWM has 178 nonprofit and governmental partners citywide.

Campus competitions and centers help you take your best ideas to the next level. Apply your creativity and entrepreneurial drive to the Student Startup Challenge. Lead through service at our Center for Volunteerism & Student Leadership.

Ready to relax? At UWM, you're just minutes away from:

- Bradford Beach
- Vibrant arts offerings
- A restaurant scene that's delicious, diverse, affordable
- Your future



**Enrollment:** 26,035  
**City:** Milwaukee  
**Population:** 595,000  
**City website:** [visitmilwaukee.org](http://visitmilwaukee.org)



**Campus Tours:**  
[uwm.edu/visit](http://uwm.edu/visit)  
414-229-2222



# UW-OSHKOSH

UWOSH.EDU | ADMISSIONS@UWOSH.EDU



## As a UW-Oshkosh Titan, your classroom experiences will be anything but textbook.

At UW-Oshkosh, we make sure that each day of your academic journey is just as fulfilling as the moment you cross the stage at graduation. You'll be provided with the opportunity to explore new subjects, discover your talents, and build a foundation for a successful life after college.

Choose from nearly 200 majors, minors, and emphases to build an academic program that fuels your passion and ignites your curiosity, and explore broad subjects through our nationally recognized general education curriculum.

At UWO, we don't just talk about the importance of a student-centered campus—we demonstrate it every day. Titans benefit from small class sizes, a mid-sized campus that supports academic and student life, and faculty who are dedicated to teaching. It's easy to see why Titans succeed—students are at the heart of all that we do.

**Titans are leaders, champions, and researchers.**

**What kind of Titan will you be?**

**Enrollment:** 13,955

**City:** Oshkosh

**Population:** 66,778

**City website:** [visitoshkosh.com](http://visitoshkosh.com)



**Campus Tours:** Mon – Fri, 10 a.m. and 2 p.m.

Sat, 10:30 a.m. (Sept – May)

920-424-3164 | [uwosh.edu/go/visit](http://uwosh.edu/go/visit)

**Titan Previews:**

2017: 7/10, 7/11, 10/6, 10/20, 11/3, 11/17

2018: 4/6, 7/16, 7/17



# UW-PARKSIDE



UWP.EDU | ADMISSIONS@UWP.EDU

The university you choose has to be the right fit. UW-Parkside provides that and so much more. Parkside's academics—including new and in-demand programs in sport management, elementary education, engineering, marketing, accounting, cyber security, and app development—are designed to help you develop skills and gain experience. Our unique location provides internship and job opportunities throughout the Milwaukee/Chicago corridor.

You'll graduate prepared for your career and confident in your abilities.

- 89% of our pre-med grads are accepted into medical school
- 91% of our business grads are employed within 6 months
- 93% of our theater grads are working in the industry or in grad school
- Nearly 100% of computer science grads are employed or in grad school

But that's only part of the journey. You belong here because Parkside's 4,600 students are active, participating in more than 70 clubs and organizations. And the Rangers rock! Our NCAA DII sports teams take excitement to a whole new level.

**Check us out for yourself – [uwp.edu/visit](http://uwp.edu/visit)  
Be at Parkside.**



**Enrollment:** 4,400

**City:** Kenosha

**Population:** 99,889

**City website:** [visitkenosha.com](http://visitkenosha.com)



**Campus Tours:**

262-595-2355 or [uwp.edu/visit](http://uwp.edu/visit)

**Ranger Saturdays:**

2017: 10/14, 11/11, 12/16

2018: 2/17, 3/17, 4/21, 5/12, 6/16

**Experience Parkside Days:**

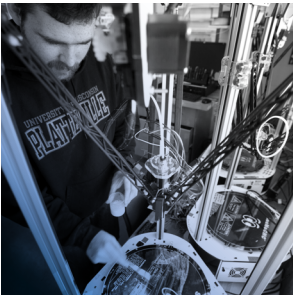
2017: 10/9

2018: 4/6



# UW-PLATTEVILLE

[UWPLATT.EDU](http://UWPLATT.EDU) | [ADMIT@UWPLATT.EDU](mailto:ADMIT@UWPLATT.EDU)



For 150 years, UW-Platteville has provided students with an affordable, high-quality education and preparation for in-demand career fields. Today our programs encompass more than 130 fields of study, with top academic areas in agriculture, biology, business, criminal justice, education, engineering, and industrial technology.

In the last year alone, our faculty, staff, and students have been contributing to cancer research, conducting a groundbreaking sports-related concussion study, and designing a bulletproof panel for backpacks. They participated in a record number of education abroad programs, which included studying agriculture in India, renewable energy practices in Brazil, and diversity and immigration in schools in the United Kingdom. They made a difference through engagement projects, while pursuing solutions to challenges in our community.

Named a Best Value College by PayScale's 2017 College ROI Report, UW-Platteville ranks first in annual ROI and second in 20-year net ROI, according to its findings on return on investment in the state of Wisconsin.

**Schedule your campus visit and discover why every day is a great day to be a Pioneer.**



**Enrollment:** 8,693  
**City:** Platteville  
**Population:** 11,200  
**City website:** [platteville.org](http://platteville.org)



**Campus Tours:**  
608-342-1125 or  
897-UWPLATT (897-5288)  
[uwplatt.edu/admission/visit](http://uwplatt.edu/admission/visit)



# UW-RIVER FALLS

UWRF.EDU | ADMISSIONS@UWRF.EDU

**Do you want to personalize your college education? Look no further. Here are the top 5 reasons UWRF is the right fit for you:**

- **Scholarship Guarantee:** You are rewarded for your hard work. Students who rank in the top 40 percent of their class and who also have a 22 or higher ACT receive automatic scholarships.
- **Location:** With our campus situated on the Kinnickinnic River and located 30 minutes from Minneapolis/St. Paul, you will join a small-town community and have easy access to fantastic entertainment and employment opportunities.
- **50+ Majors:** You have many options to choose from, including cutting-edge new programs like Data Science and Predictive Analytics, Agricultural Engineering, and Neuroscience.
- **Personalized:** Whether you participate in groundbreaking research, travel abroad, or intern with a Fortune 500 company, your experience will be customized.
- **Falcon Center:** Your life at UWRF will be varied and vibrant, with 150+ student clubs and a new \$65.3 million sports/recreation center.

**There has never been a better time to become a Falcon. Schedule your visit!**



**Enrollment:** 5,931

**City:** River Falls

**Population:** 15,000

Twin Cities Metro: 3.5 million

**City website:** rfcity.org



**Campus Tours:**

715-425-3500 or [uwrf.edu/visit](http://uwrf.edu/visit)

Mon – Fri at 10 a.m. and 1 p.m

**College Visit Days:**

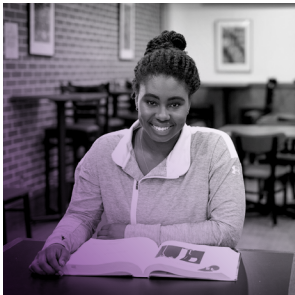
2017: 10/13, 10/19, 10/20, 10/21, 11/10, 11/11, 12/1

2018: 2/19, 3/23, 3/24, 4/6, 4/27, 4/28



# UW-STEVENS POINT

UWSP.EDU | ADMISS@UWSP.EDU



**Find yourself at home at UW-Stevens Point, where our welcoming campus is just the right size for new experiences and opportunities.**

**Learn.** Our classrooms offer a low student-to-faculty ratio and professors who inspire and challenge you, all at an affordable price. Our expanding programs in technology, health care, natural resources, and the arts prepare students as tomorrow's global professionals. Be the first to attend classes in a new state-of-the-art Chemistry Biology Building, opening fall 2018. Our School of Business and Economics is among the top programs in the nation accredited by the Association to Advance Collegiate Schools of Business (AACSB).

**Play.** With more than 200 student organizations, Pointers athletics, a popular intramural program, and a 280-acre nature preserve right on campus, you can choose many paths for recreation and pursuing your interests.

**Grow.** Be among students who are transformed personally and professionally through service learning, research, sustainable living, internships, and study abroad.

**Schedule a visit today, and find out why more than 80,000 graduates have called UW-Stevens Point home.**



**Enrollment:** 8,600  
**City:** Stevens Point  
**Population:** 26,717  
**City website:** [stevenspoint.com](http://stevenspoint.com)



**Campus Tours:**

715-346-2441 or [www.uwsp.edu/visit](http://www.uwsp.edu/visit)  
Weekdays when classes are in session and select Saturdays

**Viewpoint Days:**

2017: 10/20, 10/21, 11/3, and 11/4  
2018: 3/17 (transfer students) and 4/21



# UW-STOUT

UWSTOUT.EDU | ADMISSIONS@UWSTOUT.EDU

When you graduate from UW-Stout, Wisconsin's Polytechnic University, you'll earn more than a diploma: you'll start an exciting career with experience on your résumé. Our majors offer experiences that will stretch your mind and equip you with problem-solving and critical thinking skills valued by employers.

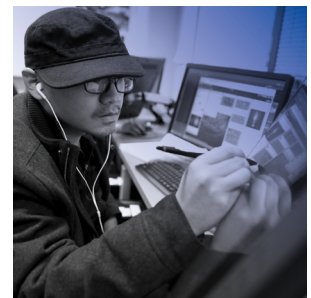
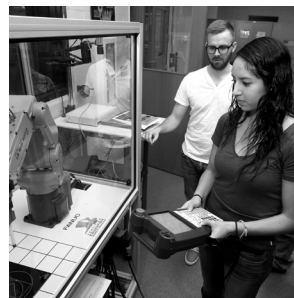
You'll spend more time in labs than in traditional classrooms. More than half of our graduates have on-the-job experience through paid internship/co-op positions.

Technology permeates campus activities. You'll receive a laptop computer, and professors integrate technology in courses.

Year in and year out, UW-Stout's graduates find employment in professional careers. In 2015-16, 97.4 percent were employed or continuing their education, and 85 percent found employment related to their major.

Graduates are paid well. The median starting salary reported for all 2015-16 graduates was \$42,500. Some majors report starting salaries of \$60,000 and higher.

**As the first university in the nation to receive the Malcolm Baldrige National Quality Award, we continuously look for ways to improve what we do best—prepare you for the future.**



**Enrollment:** 9,619

**City:** Menomonie

**Population:** 16,264

**City website:** [www.menomonie-wi.gov](http://www.menomonie-wi.gov)



**Campus Tours:** 715-232-1232

or [www.uwstout.edu/admissions/visit.cfm](http://www.uwstout.edu/admissions/visit.cfm)

**Preview Days:**

Fall 2017: 10/19, 10/20, 10/27, 11/3, 11/10

Spring 2018: 2/19, 3/23, 4/6, 4/13

**Stout Saturdays:**

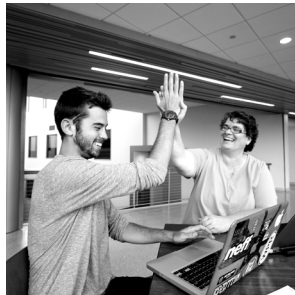
Fall 2017: 10/21, 10/28, 11/11

Spring 2018: 3/24



# UW-SUPERIOR

UWSUPER.EDU | ADMISSIONS@UWSUPER.EDU



## UW-Superior's quality academics are proven again and again.

Our campus boasts a 100 percent post-graduation success rate in 30 of our programs and a 96 percent post-graduation success rate overall. We have the best of both worlds: the cost of tuition is an incredible value, and you'll receive an education that rivals any larger-scale institution.

Our campus size contributes to the success of our students. A 16:1 student-to-instructor ratio gives you the ability to be known in the classroom and make lasting connections with your instructors—individuals dedicated to providing the experience and skill set you need for your future.

With more than 60 programs such as Transportation and Logistics Management, Art Therapy, Business Administration, Aquatic Biology, and Teacher Education, you'll stand out after graduation. Students also gain hours of real-world experience through Academic Service Learning and internships.

UW-Superior is located minutes away from Duluth and Lake Superior with a wide array of indoor and outdoor recreation opportunities such as hiking, biking, concerts, and more.

**Find your reason to Be Superior.**



**Enrollment:** 2,500  
**City:** Superior  
**Population:** 27,000  
**City website:** [visitsuperior.com](http://visitsuperior.com)



**Campus Tours:**  
715-394-8230  
[uwsuper.edu/visit](http://uwsuper.edu/visit)  
**Preview Days:**  
2017: 10/20, 10/21  
2018: 1/20, 4/7



# UW-WHITEWATER

UWW.EDU | UWWADMIT@UWW.EDU

## Step into your future at UW-Whitewater. You'll find a university on the move that offers innovative programs designed to meet the world's changing needs.

The growing field of water management, for example, requires expertise in environmental law, natural resources, aquatic biology, chemistry, and ecology. UW-Whitewater offers a degree that combines courses in business and science.

Water not your thing? Enroll in the media arts and game development program, and combine work with play to create compelling interactive games. This unique program gives students experience in art, computer science, and communication.

Have your own business idea? Test your skills in the university's entrepreneurship program. Participate in early-stage business plan contests and pitch your idea to a panel of judges. You might even win some money to start your own business.

Looking for answers to big questions? Be a part of UW-Whitewater's nationally recognized undergraduate research program, a springboard for graduate school or your career.

**At UW-Whitewater, you'll find small classes, caring faculty members, and a campus community excited about learning.**



**Enrollment:** 12,628

**City:** Whitewater

**Population:** 14,454

**City website:** whitewater-wi.gov



### Campus Tours:

Mon – Sat

[www.edu/admissions/campus-tour](http://www.edu/admissions/campus-tour)

262-472-1440

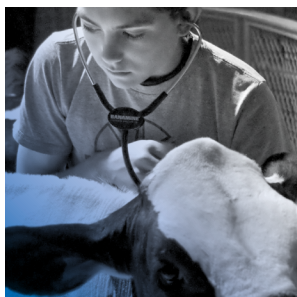
### Warhawk Premiere Days:

2017: 8/3, 9/29, 10/6, 10/9, 10/20, 10/27, 11/10



# UW-EXTENSION

UWEX.EDU | UWHELP@UWEX.EDU



**Trying to decide where to go to college? Visit [uwhelp.wisconsin.edu](http://uwhelp.wisconsin.edu) to find the information you need to choose and apply to any of the 26 UW System campuses. There you can also connect with advisers who can answer your questions.**

Our free UW Journey app (download at [uwjourney.wisconsin.edu](http://uwjourney.wisconsin.edu)) helps you find the campus that best fits your needs, navigate the application process, and explore options to pay for college. View and compare academic and campus life options to help you decide which campus to attend. There are even reminders and checklists to guide you through the entire process.

Looking for other ways to jump-start your UW education? Complete college courses online or in print at your own pace with UW Independent Learning. Visit [il.wisconsin.edu](http://il.wisconsin.edu) to see approximately 100 available courses. Credits apply toward a degree at UW campuses and other universities.

Take advantage of lifelong learning opportunities through UW-Extension offices on the 26 UW System campuses, in all 72 Wisconsin counties, and with programming offered by Wisconsin Public Television and Wisconsin Public Radio.



**Educational Contacts in 2016:**  
2,743,827



**Central Office:**  
432 N. Lake Street  
Madison, WI 53706



# PLANNING FOR ADMISSION

## COURSES REQUIRED FOR ADMISSION

The stronger the college preparatory courses you complete in high school, the more likely you'll succeed in college. All UW campuses require a minimum of 17 college preparatory credits from high school. Note that these are minimums, and that some campuses require more. Refer to pages 22–31 for campus-specific information.



**4 ENGLISH CREDITS:** Composition, literature, and rhetoric. Several campuses require at least three credits in composition and literature. Most regular and advanced courses are accepted. Courses not accepted tend to be those emphasizing applied skills, performance, or technical production.

**3 MATHEMATICS CREDITS:** Algebra, geometry, and other mathematics courses with algebra or geometry prerequisites. Courses are typically not accepted if they're taught prior to first-year algebra, do not have algebra or geometry as a prerequisite, or are computer classes. Statistics, and Transition to College Math, may not count toward the admission requirement at some campuses.



**3 NATURAL SCIENCE CREDITS:** Biology, chemistry, and physics. These courses emphasize theory and include a lab. Other courses often accepted include astronomy, earth science, geology, and physical science.

**3 SOCIAL SCIENCE CREDITS:** Theoretical study of culture, history, political science, economics, and human behavior and societies (such as sociology and psychology).

**4 ELECTIVE CREDITS:** Electives may be chosen from English, mathematics, natural science or social science, foreign language, fine arts, computer science, and other academic areas. Some campuses may accept career and technical education courses for a portion of these credits. A minimum of two credits in a single foreign language is required for admission to UW-Madison, and may help meet graduation requirements at other UW System campuses.





## OTHER COURSE REQUIREMENTS

Admissions offices make decisions based on academic and departmental policies and other criteria; therefore, some admission guidelines vary by campus. See pages 22-31 or [uwhelp.wisconsin.edu/admission-guidelines/freshman](http://uwhelp.wisconsin.edu/admission-guidelines/freshman) for details.

Remedial and basic courses and those that emphasize learning-related skills, such as English as a Second Language, do not count as college preparatory courses.

The UW System supports Youth Apprenticeship, and Career and Technical Education, programs in Wisconsin high schools. Campuses make every effort to evaluate coursework offered in these types of programs and to work with high schools and technical colleges to ensure that courses meet admission standards.

If you have questions about the acceptability of specific high school courses, talk with your school counselor and contact the admissions office at the campus you hope to attend.

## FRESHMAN ADMISSIONS POLICY

Admissions offices seek to admit students whose academic preparation, background, and personal experience suggest that they will succeed at the campus, benefit from the educational experience, and contribute to the educational environment.

Admissions offices review applications using a comprehensive, individualized process. Of primary consideration are academic factors: your college preparatory courses, rank in class, grade point average, and ACT/SAT scores.

Admissions offices may also consider your personal experiences, work experience, leadership qualities, motivation, community service, special talents, status as a nontraditional or returning adult student, and status as a veteran of the U.S. Military. Reviewers may take into account whether you are socioeconomically disadvantaged or are a member of a historically underrepresented racial or ethnic group. Other factors may also be considered.

## EARN COLLEGE CREDIT IN HIGH SCHOOL

Qualified high school students can enroll to take courses at a UW institution while still in high school. Courses may be offered online, at a UW campus, or at your high school. There are different ways you may enroll; eligibility and the amount of tuition your family will pay will be different for each option. For information, see [uwhelp.wisconsin.edu/prep-for-college/credits](http://uwhelp.wisconsin.edu/prep-for-college/credits), and talk with your school counselor and the campus you hope to attend.

All UW System campuses grant university credit for scores of 3, 4, or 5 on College Board Advanced Placement (AP) examinations and for scores of 4, 5, 6, or 7 on all Higher Level (HL) International Baccalaureate (IB) examinations. See [uwhelp.wisconsin.edu/prep-for-college](http://uwhelp.wisconsin.edu/prep-for-college) for more information.

If you have taken a Project Lead The Way–approved course and earned 70 percent or higher on the national exam, a maximum of 6 elective credits will be awarded by a UW campus. Visit [uwhelp.wisconsin.edu/prep-for-college](http://uwhelp.wisconsin.edu/prep-for-college) for details.





## APPLICATION DATES +

## COLLEGE PREPARATORY CREDIT REQUIREMENT

(A Minimum of 17 Credits Is Required)

### UW COLLEGES uwcc.edu/admissions

Students may begin submitting applications on September 1, 2017. Early application is encouraged. Admission decisions are made on a rolling basis. Applications received by August 15, 2018, will be given priority consideration.

- 4 English
- 3 Mathematics: must include at least one credit of algebra and the equivalent of one credit of geometry.
- 3 Natural Science
- 3 Social Science/History
- 4 Electives: chosen from the above areas, foreign language, fine arts, computer science, and other academic areas.

### UW-EAU CLAIRE uwec.edu/admissions

Students may begin submitting applications on September 1, 2017. Submit an application and all required documents for fall 2018 admission no later than December 1, 2017, for priority consideration, and by February 1, 2018, for space-available consideration.

- 4 English: including three credits of literature and/or composition.
- 3 Mathematics: algebra, geometry, and one credit of advanced college preparatory mathematics (e.g., algebra II/advanced algebra).
- 3 Natural Science: freshman science is considered one of the natural science credits.
- 3 Social Science/History: including one credit of world or American history.
- 4 Electives: chosen from the above areas, foreign language, art, music, speech, computer science, and other academic areas.

### UW-GREEN BAY uwgb.edu/admissions

Students may begin submitting applications on September 1, 2017. Admission decisions are made on a rolling basis. Applications will be processed as long as space is available. Early application is encouraged.

- 4 English
- 3 Mathematics: algebra, geometry, and at least one additional credit of advanced college-prep math.
- 3 Natural Science
- 3 Social Science/History
- 4 Electives: choose from the areas above, foreign language, art, music, speech, computer science, and other academic areas.

The UW Colleges is an institution of access. New freshmen are likely to be admitted if they rank in the top 75% of their class. ACT/SAT scores from the high school are accepted for admission. An official ACT/SAT score report, received directly from the testing agency, is preferred.

There is no admissions wait list. However, some applicants may be asked to submit additional information so that an informed admission decision might be made.

No deposit required.

Documentation such as 7th- or 8th-semester/term grades, additional ACT/SAT scores, or other material may be requested to develop a more comprehensive applicant file.

Admission is competitive and selective. We consider high school performance (class rank, rigor of coursework, cumulative GPA, and trend in grades), ACT/SAT scores, nonacademic factors (leadership, involvement, talent, accomplishments, and diversity in background and experience), recommendations, and personal statements. Academic preparation is the primary consideration for admission.

The following is a general profile of our admitted freshmen for fall 2017. Numbers reflect the middle 50% range, so 25% of admitted freshmen are above this range and 25% are below.

**PROFILE OF ADMITTED STUDENTS**

**Criteria: Middle 50%**

Class rank: 62nd–87th percentile

GPA: 3.19–3.77

ACT composite: 22–26

Official ACT/SAT score reports, received directly from the testing agency, are required for review of an application.

Some applicants who apply before February 1, 2018, may have an admission decision postponed. After all applications received by the February 1 deadline have been evaluated, all remaining postponed applications will be reviewed; a final decision will be made no later than March 15, 2018. Admission will be offered to as many postponed applicants as possible to fill the freshman class.

Admitted students are required to submit a \$100 enrollment deposit. A deferral may be requested due to economic hardship. The deposit is refundable until May 1, 2018.

All applicants receive a comprehensive review, considering all factors that influence a student’s skills, motivation, and readiness to learn. We value the academic achievements, activities, involvement, and the hardships or successes that students disclose. Letters of recommendation are highly encouraged for students who may be close to meeting the profile of an admitted student or have unique circumstances that impacted their academic performance.

**PROFILE OF ADMITTED STUDENTS**

**Criteria: Middle 50%**

GPA: 2.98–3.68

ACT composite: 20–25

Official ACT/SAT score reports, received directly from the testing agency, are required prior to an admission decision being made.

UW-Green Bay is committed to assisting all students on their path to our campus. This may involve being admitted through unique programs including the Rising Phoenix program. To learn more options, contact us at 920-465-2111 or uwgb@uwgb.edu.

No deposit required.



## APPLICATION DATES +

## COLLEGE PREPARATORY CREDIT REQUIREMENT

(A Minimum of 17 Credits Is Required)

**UW-LA CROSSE**  
uwlax.edu/admissions

Students may begin submitting applications for fall 2018 on September 1, 2017. All complete applications received by February 1, 2018, will receive full consideration. Applications received or completed after that date will be considered on a space-available basis. Applications for spring 2018 are accepted beginning September 1, 2017.

- 4 English
- 3 Mathematics: algebra, geometry, and advanced algebra.
- 3 Natural Science: at least two credits from biology, chemistry, physics, earth science, or advanced courses in these disciplines.
- 3 Social Science/History
- 4 Electives: chosen from the above areas, foreign language, fine arts, computer science, and other academic areas.

Applicants are encouraged to select courses beyond the minimum. Students completing rigorous courses, including senior year, will be stronger candidates for admission.

### AVERAGE APPLICANT PREPARATION

4	English	3	Foreign Language
4	Mathematics	2	Additional Academic Credits
4	Natural Science	21	Total credits
4	Social Science/History		

**UW-MADISON**  
admissions.wisc.edu

U.S. citizens, permanent residents, and international students have the same application deadlines and decision plans.

### FRESHMAN DEADLINES AND DECISIONS

Fall Early Action Deadline: Nov. 1  
Decision: By the end of January  
Fall Regular Decision Deadline: Feb. 1  
Decision: By the end of March  
Spring Regular Decision Deadline: Oct. 2  
Decision: By the end of December

### TRANSFER STUDENT DEADLINES AND DECISIONS

Fall Priority Decision Deadline: Feb. 1  
Decision: By the end of March  
Fall Regular Decision Deadline: March 1  
Decision: By the end of April  
Spring Regular Decision Deadline: Oct. 2  
Decision: By the end of December

The high school record should demonstrate both rigor and breadth in the types of coursework pursued. A competitive academic record should show some of the most challenging advanced-level work offered at or through your school in as many areas as possible, while maintaining consistent performance.

### TYPICAL FOR ADMISSION

- 4 English
- 4 Math
- 3-4 Science
- 3-4 Social Studies
- 3-4 Single Foreign Language
- 2 Additional Academic/Fine Arts
- 19-22 Total credits

While academic preparation is the primary criterion used in the admission review process, nonacademic secondary factors may contribute to the strength of an application. These may include qualities such as demonstrated leadership, extracurricular involvement, special talent, personal statement, recommendations, and/or adding a diverse dimension to our campus community.

The following is a general profile of our admitted freshmen for fall 2017. Numbers reflect the middle 50% range, so 25% of admitted freshmen are above this range and 25% are below.

**PROFILE OF ADMITTED STUDENTS**

**Criteria: Middle 50%**

Class rank: 69th–90th percentile

ACT composite: 23–26

Official ACT/SAT score reports must be received directly from the testing agency for review of an application.

Some applicants may be placed on a postpone list, and an admission decision is made at a later date. Review of postponed students begins in early December and continues thereafter, dependent upon the number of applications received and space available in the freshman class. Students are encouraged to submit additional information like senior grades, updated ACT/SAT scores, and letters of recommendation. Students will be notified of a final admission decision no later than May 1, 2018.

Submit a \$100 enrollment deposit as soon as possible following admission to ensure a place in the freshman class. The deposit is refundable until May 1, 2018. Upon receipt of the \$100 enrollment deposit, on-campus housing information will be sent. Enrollment deposits submitted after May 1 will be accepted on a space-available basis.

We have a holistic, competitive, and selective admissions process that first considers the academic record, including rigor of courses such as AP or IB, and overall performance. Essays, standardized test scores, one required letter of recommendation from an academic source, and consistent involvement in activities in or outside of school are also considered.

**PROFILE OF ADMITTED STUDENTS**

**Criteria: Middle 50%**

GPA: 3.8–4.0 (unweighted academic)

Class Rank: 84th–97th percentile

ACT composite: 27–32

SAT composite: 1860–2130

Official ACT or SAT score reports are required and should be sent directly from the testing agency. The writing portions of the ACT and SAT are not required.

When our admissions counselors review an application, they make one of four admission decisions—admit, defer, deny, or wait list. A deferred decision means a student is neither admitted nor denied at the time of the initial review. The application is held for further consideration during the Regular Decision review period. Deferred applicants will receive a decision by the end of March. Students offered a spot on the unranked wait list will have until April 15 to accept. They may be offered admission should space become available after May 1.

Students accept their offer of admission online in the Student Center and pay a \$100 deposit, which is applied toward tuition and fees. Students applying for fall must accept their offer by May 1. Students applying for spring must accept their offer by December 15 or 10 days from the date of their admission letter, whichever is later.



## APPLICATION DATES

## COLLEGE PREPARATORY CREDIT REQUIREMENT

(A Minimum of 17 Credits Is Required)

### UW-MILWAUKEE uw.milwaukee.edu/admissions

Students may begin submitting applications on September 1, 2017. Our priority deadline is March 1 (December 15 for spring). We will continue to accept and process applications and related materials after that date as space and resources allow. Scholarship consideration deadline for Art is December 15 and for Music, March 1.

- 4 English: including three credits of literature and/or composition.
- 3 Mathematics: algebra, geometry, and higher. College of Engineering and Applied Science (CEAS) recommends four credits.
- 3 Natural Science: including at least one credit of lab science. CEAS and Nursing require at least one credit of chemistry; CEAS also recommends one credit of physics.
- 3 Social Science/History
- 4 Electives: at least two must be from the above areas, foreign language, speech/communication, or other academic areas.

Foreign language is not required but is strongly recommended. Foreign language credits earned in high school help satisfy UW-Milwaukee's foreign language requirement for graduation.

### UW-OSHKOSH admissions.osh.edu

Apply early. Students may begin submitting applications on September 1, 2017. Admission decisions are made on a rolling basis, and applications will be processed as long as space is available. Students who apply early have the first options for class registration dates, housing, and course selection.

- 4 English
- 3 Mathematics: algebra I, geometry, and algebra II.
- 3 Natural Science
- 3 Social Science/History
- 4 Academic Electives: chosen from the above areas, foreign language, fine arts, or computer science.

Most admitted students have completed additional college preparatory units in math or science. Applicants who meet the minimum credit requirements are given consideration for admission; however, admission is not automatic or guaranteed.

### UW-PARKSIDE uw.parkside.edu/admissions

Students may begin submitting applications on September 1, 2017. Admission decisions are made on a rolling basis, and applications will be processed as long as space is available. Students who apply early have better opportunities for housing, scholarship, and course selection.

- 4 English: including three credits of literature and composition.
- 3 Mathematics: algebra, geometry, and higher.
- 3 Natural Science: including at least one credit of lab science.
- 3 Social Science/History
- 4 Electives: chosen from the above areas, foreign language, fine arts, computer science, and other academic areas.

Foreign language is not required for admission; however, students may fulfill the UW-Parkside graduation requirement in foreign language by taking two years of the same foreign language in high school.

Academic preparation is an important part of the admission decision. To be best prepared for college, applicants are encouraged to exceed the minimum credit requirements for admission.

## FRESHMAN ADMISSION GUIDELINES

For many programs, new freshmen are likely to be admitted if they have appropriate high school preparation, rank in the top 50% of their class, or have an ACT composite score of at least 21 (or 980 SAT). However, Architecture, Engineering, Health Sciences, and Nursing require stronger academic preparation. Students applying to one of these programs will be required to select an additional alternate major (this alternate can't be one of the selective majors listed here).

In addition to academic preparation, factors like leadership, motivation, and maturity, as addressed in your personal statement and/or recommendations, are reviewed and considered. UWM provides broad access to individuals and encourages all interested students to apply.

All freshman applicants under age 21 must submit ACT/SAT scores. Test scores posted on a high school transcript are accepted as official.

Applicants for admission are provided a comprehensive review in which academic preparation is the most important criterion. However, nonacademic factors are also considered.

These factors may include leadership experience, volunteerism, community service, diversity of personal background, and work experience that will positively contribute to the strength of the university and reflect its mission and values.

The following is the profile for our 2017 admitted freshmen. They are the middle 50% range, so 25% of admitted freshmen are above this range and 25% are below.

### PROFILE OF ADMITTED STUDENTS

#### Criteria: Middle 50%

Class rank: top 18–43%

GPA: 3.09–3.66

ACT composite: 21–24

ACT and SAT scores provided on the high school transcript are acceptable for application purposes.

New freshmen are likely to be admitted if they rank in the top 50% of their class and have a minimum ACT composite score of 21 (SAT equivalent).

ACT/SAT scores from the high school are accepted for admission. An official ACT/SAT score report, received directly from the testing agency, is preferred.

## POSTPONED/ DEFERRED ADMISSION OR WAITING LIST

Qualified applicants who cannot be accommodated because of deadlines or capacity limitations will be offered the opportunity to be considered for a future term. Applicants not admissible to certain programs may be admitted to their second option or may be offered admission via our Academic Opportunity Center. In some cases, admission will be contingent upon successful completion of a summer preparatory program. Such contingencies and/or conditions will be outlined in your acceptance letter.

There is no admissions wait list. However, some applicants may be asked to submit additional information so that an informed admission decision might be made.

Documentation such as 7th- or 8th-semester/term grades, additional ACT/SAT scores, or other material may be requested to develop a more comprehensive applicant file.

There is no admissions wait list. However, some applicants may be asked to submit additional information so that an informed admission decision might be made.

Documentation such as 7th- or 8th-semester/term grades, additional ACT/SAT scores, or other material may be requested to develop a more comprehensive applicant file.

## ENROLLMENT DEPOSIT

Students are required to pay a \$150 Confirmation Deposit to secure a spot in our freshman class.

Admitted students are required to submit a \$100 enrollment deposit. A waiver may be requested due to economic hardship or inability to pay. The deposit is refundable until May 1, 2018. Early submission of the deposit provides the greatest flexibility in registration dates.

A \$100 enrollment fee is added to the student's bill after enrollment.



## APPLICATION DATES

## COLLEGE PREPARATORY CREDIT REQUIREMENT

(A Minimum of 17 Credits Is Required)

### UW-PLATTEVILLE

[uwplatt.edu/admission](http://uwplatt.edu/admission)

Students may begin submitting applications on September 1, 2017. Admission decisions are made on a rolling basis, and applications will be processed as long as space is available. Applicants are encouraged to apply early.

- 4 English
- 3 Mathematics: algebra, geometry, and higher.
- 3 Natural Science: two must include lab experience.
- 3 Social Science/History
- 4 Electives: chosen from the above areas, foreign language, fine arts, computer science, and other academic, technical, and career areas.

Foreign language is not required but is strongly recommended. Foreign language credits earned in high school help satisfy UW-Platteville's foreign language requirement for graduation.

### UW-RIVER FALLS

[uwrf.edu/admissions](http://uwrf.edu/admissions)

Students may begin submitting applications on September 1, 2017. Students are admitted on a rolling basis. Applicants are encouraged to apply early, since admitted students receive priority for housing and registration dates.

- 4 English
- 3 Mathematics: algebra, geometry, and algebra 2 (or higher).
- 3 Natural Science: must include two from biology, chemistry, or physics.
- 3 Social Science/History
- 4 Electives: chosen from the above areas, foreign language, fine arts, computer science, and other academic, technical, and career areas.

Academic preparation, specifically the strength of high school coursework, is an important part of the admission decision. Applicants are encouraged to exceed the minimum credit requirements for admission.

### UW-STEVENS POINT

[uwsp.edu/admissions](http://uwsp.edu/admissions)

Students may begin submitting applications on September 1, 2017. Apply, be accepted, and submit the \$100 enrollment deposit before the freshman class total is reached for fall 2018 admission. Applicants are encouraged to apply early.

- 4 English: three credits must be composition and literature. The fourth credit may be any non-remedial course offered through the English department that meets DPI graduation requirements.
- 3 Mathematics: algebra, geometry, and higher.
- 3 Natural Science
- 3 Social Science/History
- 4 Electives: two must be chosen from the above areas or foreign language, fine arts, or computer science (excluding keyboarding). Two may be from the above areas and other academic, technical, and career areas (excluding cooperative education).

## FRESHMAN ADMISSION GUIDELINES

## POSTPONED/ DEFERRED ADMISSION OR WAITING LIST

## ENROLLMENT DEPOSIT

New freshmen will be considered for admission if they rank in the top 50% of their class or have a minimum ACT composite score of 22, or 1110 SAT.

All applications receive a comprehensive review. Academic preparation is the primary criterion used in the review process. Consideration will also be given to factors such as stronger academic performance later in high school, demonstrated leadership skills in school or community, personal statements, and recommendations.

ACT/SAT scores from the high school are accepted for admission. An official ACT/SAT score report, received directly from the testing agency, is required prior to the advising/registration program.

Additional information may be requested from some applicants. This may include letters of recommendation, personal statement from the student, first quarter/semester senior grades, and any other personal characteristics that should be taken into consideration in the admission decision.

Admitted students are required to submit a \$100 enrollment deposit as soon as possible to ensure a place in the freshman class. The deposit is refundable until May 1, 2018.

The following is a general profile of our admitted freshmen for fall 2017. Numbers reflect the middle 50% range, so 25% of admitted freshmen are above this range and 25% are below.

### PROFILE OF ADMITTED STUDENTS

#### Criteria: Middle 50%

Class rank: top 17–51%

ACT composite 20–25

Nonacademic factors are also considered in the admission decision. They may include, but are not limited to, leadership, community service, creativity and/or unique talents, and personal characteristics that contribute to the strength and diversity of the university.

ACT/SAT scores from the high school are accepted for admission. Preference is for an official ACT/SAT score report received directly from the testing agency.

All applications are reviewed on an individual basis. Some applicants may be asked to submit additional information to assist in making an admission decision. This may include a letter from the student addressing unique circumstances that should be considered, updated senior grade reports, letters of recommendation, and/or updated test scores.

No deposit required.

Admission is competitive. Academic preparation (class rank, rigor of coursework, cumulative and academic GPA, trend in grades, and ACT/SAT scores) is the primary criterion used in the review process. We also consider nonacademic factors such as demonstrated leadership, involvement, accomplishments, special talents, and diversity in background and experience.

The following is a general profile of our admitted freshmen for fall 2017. Numbers reflect the middle 50% range, so 25% of admitted freshmen are above this range and 25% are below.

### PROFILE OF ADMITTED STUDENTS

#### Criteria: Middle 50%

GPA: 3.2–3.75

ACT composite: 21–25

ACT/SAT scores from the high school are accepted for admission.

All applications are reviewed on an individual basis. Some applicants may be placed on a postpone list for admission on a space-available basis.

A \$100 deposit, refundable until May 1, 2018, is required to ensure a place in the fall 2018 class.



## APPLICATION DATES

## COLLEGE PREPARATORY CREDIT REQUIREMENT

(A Minimum of 17 Credits Is Required)

### UW-STOUT admissions.uwstout.edu

Students may begin submitting applications on September 1, 2017. Apply early. Admission decisions are made on a rolling basis, and applications will be processed as long as space is available.

Students interested in one of the Bachelor of Fine Arts programs must submit a portfolio after being admitted to the university. For more information on specific portfolio requirements and deadlines, go to [www.uwstout.edu/admissions/bfa\\_process.cfm](http://www.uwstout.edu/admissions/bfa_process.cfm)

- 4 English: including literature, composition, rhetoric, and speech.
- 3 Mathematics: algebra I, geometry, and algebra II. A fourth year is strongly encouraged for majors in science, technology, engineering, and mathematics.
- 3 Natural Science
- 3 Social Science/History
- 4 Electives: chosen from the above areas, foreign language, fine arts, computer science, and other academic, technical, and career areas.

Foreign language is not required for admission.

### UW-SUPERIOR uwsuper.edu/admissions

Students may begin submitting applications on September 1, 2017. Students who apply early have better opportunities for course selection and scholarships, if eligible.

- 4 English: including three credits of literature and composition.
- 3 Mathematics: algebra, geometry, and higher.
- 3 Natural Science
- 3 Social Science/History
- 4 Electives: chosen from the above areas, foreign language, fine arts, computer science, and other academic, technical, and career areas.

### UW-WHITEWATER www.edu/admissions

Students may begin submitting applications on September 1, 2017. Admission is rolling and will remain open until the class is filled. It is strongly recommended that students apply early because the priority scholarship consideration deadline is January 1, 2018.

- 4 English: including literature, composition, and rhetoric.
- 3 Mathematics: algebra, geometry, and advanced algebra.
- 3 Natural Science: biology, chemistry, or physics are preferred.
- 3 Social Science/History
- 4 Electives: chosen from the above areas, foreign language, fine arts, computer science, and other academic areas.

## FRESHMAN ADMISSION GUIDELINES

## POSTPONED/ DEFERRED ADMISSION OR WAITING LIST

## ENROLLMENT DEPOSIT

Academic preparation and success are the primary factors considered for admission to the university. Admission will be based on multiple criteria including academic rigor, academic GPA, trend in grades, rank in class, and ACT/SAT scores. We also consider nonacademic factors such as leadership, volunteerism, personal statement, letters of recommendation, honors and awards, socio-economic background, extracurricular activities, diversity of personal background, and work experience.

New freshmen are likely to be admitted if they rank in the top 50% of their class or have a minimum ACT composite score of 22 (SAT equivalent).

A select number of majors are competitive and require further academic achievement. To see a list of these majors, go to [www.uwstout.edu/admissions/criteria.cfm](http://www.uwstout.edu/admissions/criteria.cfm)

ACT/SAT scores from the high school are accepted for admission.

For some applicants, additional information will be required. The additional information may include a letter from the student addressing his or her potential for academic success, first quarter/semester senior grades, letters of recommendation, updated test scores if applicable, and any additional information the applicant wishes to provide.

No deposit required.

New freshman applications are reviewed on multiple criteria including high school curriculum, cumulative GPA, class rank, and ACT/SAT score. Nonacademic factors that are also considered include leadership, community service, unique talents, and contribution to the diversity of the university.

New freshmen are likely to be admitted if they rank in the top 50% of their class or have a minimum ACT score of 21 (SAT equivalent).

ACT/SAT scores from the high school are accepted for admission. An official ACT/SAT score report, received directly from the testing agency, is preferred.

Applicants below the top 50% of their class who have not earned a minimum ACT of 21 (SAT equivalent) may be considered for special programs through Student Support Services. Personal characteristics that contribute to the richness and diversity of the university will also be considered.

A \$100 deposit, refundable until May 1, 2018, is required to ensure a place in the freshman class.

A comprehensive review is conducted for admission purposes. ACT/SAT results, an upward trend in grades, and strong academic rigor in course selection can impact admission decisions favorably. UW-Whitewater also considers nonacademic factors such as involvement, service and leadership, honors, work experience, and the personal statement.

The following is a general profile of our admitted freshmen for fall 2017. Numbers reflect the middle 50% range, so 25% of admitted freshmen are above this range and 25% are below.

### PROFILE OF ADMITTED STUDENTS

#### Criteria: Middle 50%

GPA: 3.00–3.55

Class rank: top 22–53%

ACT composite: 20–25

ACT/SAT scores should be submitted at the time of application. Standardized exam scores provided by the high school are also accepted for admission review.

If there is not sufficient academic information to make a decision, more documentation may be requested to supplement an application for admission. When 7th-semester academic work is requested, the desire is to see an upward trend in academic performance to increase the chances of being admitted.

A \$100 refundable enrollment deposit is required.



# APPLYING FOR ADMISSION

## HOW TO APPLY

You may use the UW System online application at [apply.wisconsin.edu](http://apply.wisconsin.edu) to apply to multiple campuses. You will also have the option to pay the application fee online with a credit card after your application is submitted. Or download a paper version of the application at [apply.wisconsin.edu](http://apply.wisconsin.edu).

**In addition to sending in your online or paper application, submit three items to complete your file:**

1

An official copy of your high school transcript. If you've completed any college coursework or attended multiple high schools, please include an official transcript from each institution you attended.

2

ACT or SAT scores. Some admissions offices require an official score report directly from the testing agency before they will evaluate your application. See pages 22–31 for details.

3

A \$50 application fee for each campus to which you apply; UW-Madison's application fee is \$60. In cases of exceptional need, the application fee may be waived. Contact the admissions office or UW HELP for details.

## AFTER THE ADMISSION DECISION

UW System campuses reserve the right to rescind admission if you fail to meet the conditions on which your admission was based. If you are notified of admission to a UW campus before you graduate from high school, you are expected to successfully complete your coursework in progress and maintain good academic status.

Application priority dates and deadlines vary from campus to campus, and sometimes among different programs at the same campus. To receive full and equal consideration, submit your application and supporting documents before the priority dates and deadlines listed on pages 22–31.

**AUGUST 1** Students may work on applications for fall 2018 but not yet submit them

**SEPTEMBER 1** Students may begin submitting applications for fall 2018

*The sooner you apply, the sooner you will receive an admission decision.*



# MAJORS

Maybe you've always known what you want to study.  
Maybe you have yet to decide. At [majormania.uwex.edu](http://majormania.uwex.edu) we make it easy to search for majors and other academic programs.

**A UW ASSOCIATE DEGREE** can be earned in two years and is the foundation for a bachelor's degree. Completion of a UW associate degree satisfies the university-wide general education breadth requirements at another UW campus. You may earn one from the UW Colleges—even online—or from some four-year UW campuses.

**BACHELOR'S DEGREES** are offered at all UW institutions. Our campuses offer more than 300 undergraduate majors (primary areas of study) listed on the following pages. The chart also lists submajors, which are secondary areas of study.

**PRE-PROFESSIONAL PROGRAMS** such as pre-medicine or pre-law are not majors. They are areas of study that can be part of many majors. These programs will prepare you for professional degrees such as law, medicine, pharmacy, and veterinary medicine. For details, see campus websites or contact the admissions offices.

**GRADUATING IN FOUR YEARS:** If you choose a major early and work closely with an adviser, you're more likely to complete your degree in four years. While most programs can be completed in four years, some take longer because of internships, licensing requirements, specialized coursework, or study abroad. Visit [uwhelp.wisconsin.edu/campus-profiles](http://uwhelp.wisconsin.edu/campus-profiles) for links to information about four-year plans.

**GRADUATE AND PROFESSIONAL PROGRAMS:** You may decide to continue your education after earning a bachelor's degree. All of our four-year campuses offer master's degrees, and some offer doctorate and professional degrees. Search [majormania.uwex.edu](http://majormania.uwex.edu) for your degrees of interest.





## AGRICULTURAL & NATURAL RESOURCES

	UW-EAU CLAIRE	UW-GREEN BAY	UW-LA CROSSE	UW-MADISON	UW-MILWAUKEE	UW-OSHKOSH	UW-PARKSIDE	UW-PLATTEVILLE	UW-RIVER FALLS	UW-STEVENS POINT	UW-STOUT	UW-SUPERIOR	UW-WHITEWATER
Agricultural & Applied Economics			M					S					
Agricultural Business/Mgt			M				M	M					
Agricultural Engineering								M					
Agricultural Engineering Technology								S	M				
Agriculture Studies								M					
Agronomy			M				M	S					
Animal Science			M				M	M					
Conservation/Environmental Sci				M				M		S			
Dairy Science			M				M	M					
Environmental Horticulture							M	S					
Environmental Policy & Planning	M												
Environmental Sciences	S	M	S	M				M		M	M	M	
Environmental Studies			S	M		M	M		S				S
Farm Management								S	S				
Fisheries & Water Resources									M	S			
Food Science/Technology				M				M	M				
Forestry			S	M					M				
Horticulture			M					M	M	S			
Life Sciences Communication			M										
Poultry Science			M										
Reclamation, Environ & Conservation							M						
Resource Management										+	S	S	
Soil & Waste Resources									M				
Soil/Crop Science				M				M	M	S			
Wildlife Ecology/Management				M					M				

## AREA, ETHNIC & CULTURAL STUDIES

	UW-EAU CLAIRE	UW-GREEN BAY	UW-LA CROSSE	UW-MADISON	UW-MILWAUKEE	UW-OSHKOSH	UW-PARKSIDE	UW-PLATTEVILLE	UW-RIVER FALLS	UW-STEVENS POINT	UW-STOUT	UW-SUPERIOR	UW-WHITEWATER
Afro-American Studies				M	M	S							
American Indian Studies	M	M		S	S			S		S			
Asian Languages & Cultures				S	M	S	S	S		S			S
Canada - US Studies						S							
Ethnic & Racial Studies				S		S	S	S		S			S
First Nations Studies		M											
Global Studies	S	S			M					S			
International Peace Studies					S					S	S		S
International Studies	S		S	M	M	M	M	M	M	M	S		M
Japanese Studies							M						M
Jewish Studies				M	M								
Latin Amer, Carib & Iberian Studies				M									
Latin Amer, Carib & US Latino Stud					M								
Latin American Studies	+		S	S	S	S				S			S
Religious Studies	M	S		M	M	M				S			S
Russia & East European Studies	S		S	S						S			
Scandinavian Studies				M	S								
Women's & Gender Studies				M	M	M	S		S		S		
Women's Studies	M	M		S	S	S	S	S	S	S	S		M

## BIOLOGICAL & PHYSICAL SCIENCES

	UW-EAU CLAIRE	UW-GREEN BAY	UW-LA CROSSE	UW-MADISON	UW-MILWAUKEE	UW-OSHKOSH	UW-PARKSIDE	UW-PLATTEVILLE	UW-RIVER FALLS	UW-STEVENS POINT	UW-STOUT	UW-SUPERIOR	UW-WHITEWATER
Applied Science									M	M			
Aquatic Science	S		S							S	S	S	S
Astronomy-Physics			S	M	S					S			
Atmospheric & Oceanic Sciences				M	M								
Biochemistry	S		M	M	M	S	S	S	S	M	S	S	S
Biochemistry/Molecular Biology	M	S			S						S		
Biology	+	+	+	M	M	+	+	+	+	+	S	+	+
Biotechnology					S			S	M	S	S		
Botany		S	S	M				S		S	S		
Chemistry	+	+	+	M	M	+	+	+	+	+	S	+	+
Chemistry Course					M								
Chemistry with Business Emphasis	M		S										
Conservation Biology				M					S	S			
Earth Science	+	+			+	S		+	+				
Entomology				M									
General Science	+	+						+	+	+	M		+
Genetics				M									
Geology/Geophysics/Geosciences	+	+		M	M	+	M		+	M	S		S
Human Biology		M									S		
Hydrogeology/Water Chemistry	S				S			S					
Materials Science	M										S		
Microbiology	S		M	M	M	M				S			
Molecular Biology	M		S	M		S		S					
Molecular Biology & Bioinformatics							M						
Natural Science						+				+			
Nutritional Sciences	S	S	M	M							M		
Pharmacology & Toxicology				M									
Physics	+	+	+	M	M	+	M		+	+	S		+
Plant Pathology				M							S		
Polymer Chemistry									S	S			
Science (Broad Area)	+	+	+			+		+	+	+	M		+
Sustainable Food & Nutrition										M			
Zoology	S		M					S		S			

## KEY

- M** Major (primary area of study)
- +** Major plus optional teacher certification
- S** Submajor (secondary area of study)
- +** Submajor plus optional teacher certification
- \*** Associate degree

**Note:** Academic programs in this chart are grouped into categories; official names might differ. Consult campus admissions offices and websites for complete information. Not all submajors are displayed.

## BUSINESS

	UW-EAU CLAIRE	UW-GREEN BAY	UW-LA CROSSE	UW-MADISON	UW-MILWAUKEE	UW-OSHKOSH	UW-PARKSIDE	UW-PLATTEVILLE	UW-RIVER FALLS	UW-STEVENS POINT	UW-STOUT	UW-SUPERIOR	UW-WHITEWATER
Accounting	M	M	M	M	M	M	M	M	M	M	M	M	M
Actuarial Science	S		S	M	M					S	S	S	
Business Administration	M	M	S		S		M	M	M	1	M	M	M
Business for Non-Business Majors			S	S									
Economics	+	+	M	M	+	M	M		M	+	+	M	+
Entrepreneurship	S			S	S	S	S			S			M
Finance	M	S	M	M	M	M	S	S	S	S		S	M
Golf Enterprise Management											M		
Graphic Communications											M		
Hotel, Restaurant & Tourism Mgt											M		
Human Resources Management	S	S		M	M	M	S	S			S		M
Information Science & Technology	S	M			M								M
Information Systems	M		M	M		M							
Integrated Science-Business													M
International Business	M		M	M	M	S		S	S	S	S	M	M
Management	M	S	M	M		M		S	S	S	M	S	M
Management Information Systems	M		M		M		M	S					
Marketing	M	S	M	M	M	M	M	S	S	S	+	S	+
Operations & Technology Mgt				M									M
Personal Finance				M									
Real Estate & Urban Land Econ				M						S			S
Real Estate Property Management											M		S
Retail Merchandising & Management											M		
Retailing & Consumer Behavior				M									
Risk Management & Insurance			S	M						S			S
Supply Chain & Operations Mgt	S			S	M	M					M		M
Transportation & Logistics Mgt												M	

## COMMUNICATION & LETTERS

	UW-EAU CLAIRE	UW-GREEN BAY	UW-LA CROSSE	UW-MADISON	UW-MILWAUKEE	UW-OSHKOSH	UW-PARKSIDE	UW-PLATTEVILLE	UW-RIVER FALLS	UW-STEVENS POINT	UW-STOUT	UW-SUPERIOR	UW-WHITEWATER
Advertising	S			S	S								S
Broadcast Journalism/Production				S	S				+	S			S
Communication/Comm Arts	M	+	M	M	M	+	M		M	M	S	M	M
Electronic Media				S						S	S		S
English	+	+	+	M	+	+	+	+	+	+	+	S	+
Integrated Strategic Communication	M												
Journalism	M	S		M	S	M		+	M	S	S	S	+
Journalism, Advertising & Media Studies				M						S			S
Marketing Communications									M				
Philosophy	M	M	M	M	M	M	M	M	S	M	S		S
Professional Communic/Emerging Media												M	
Public Relations	S	S		S	M	S				S			S
Radio-TV-Film			S	S	S	M				S			S
Writing													M
Writing, Creative	S	S	S	S	S				+	S	S		
Writing, Professional/Technical	S		S	S					S	+	S	S	S

## EDUCATION-RELATED STUDIES

	UW-EAU CLAIRE	UW-GREEN BAY	UW-LA CROSSE	UW-MADISON	UW-MILWAUKEE	UW-OSHKOSH	UW-PARKSIDE	UW-PLATTEVILLE	UW-RIVER FALLS	UW-STEVENS POINT	UW-STOUT	UW-SUPERIOR	UW-WHITEWATER
Agricultural Education								+	+				
Art Education		+	+	+	+	+		+	+		+	+	+
Business Education											+		+
Career, Technical Edu & Training											+		
Coaching	+	S	S				S	+	+	+	S		S
Community Engagement & Education				M									
Early Childhood Education	+	+	+					+	+	+	+	+	+
Early-Mid Childhood (Elementary Ed)	+	+	+	+		2	+	+	+	+	+	+	+
Education		+		+									
Educational Studies				M	M								
Family & Consumer Education										+	+		
General Science	+	+						+	+	+	M		+
Health & Human Performance						S		+	+		M		S
Language Arts & Reading	+					+	+		+				
Marketing & Business Education											+		+
Music Education, Choral	+	+	+	+	+	+	+	+	+	+	+	+	+
Music Education, General	+	+	+	+	+	+	+	+	+	+	+	+	+
Music Education, Instrumental	+	+	+	+	+	+	+	+	+	+	+	+	+
Natural Science							+			+			
Outdoor Education									S	+			S
Physical Education	+	+	+			+			+	+		+	+
Physical Education, Special	+	+				+			+	+			
Physical Science	+								+	+			S
Physics-Math	+												
School Health Education		+				+			+	+	+	+	+
Science Education		+							+	+	+		
Social Studies/Science	+	+				+		+	+	+	M	+	+
Special/Exceptional Education	+	+	+	+	+	3	+	+		+	+	+	+
STEM Mid Childhood-Early Adoles Ed								+					
Teaching Engl/Spkrs Other Lang	+	+	+	+			+		+	+			+
Technology & Science Education											+		
Technology Education								+			+		

The UW Colleges Associate of Arts and Science (AAS) degree is a foundation for many college majors and for a bachelor's degree. UW universities typically consider UW Colleges students with the AAS degree to have satisfied the university-wide general education breadth requirements.

- (Business Administration) UW-Stevens Point degree program also available at UW-Marathon County.
- (Early-Mid Childhood (Elementary Ed)) UW-Oshkosh degree program also available at UW-Sheboygan.
- (Special/Exceptional Education) UW-Oshkosh degree program also available at UW-Fond du Lac, UW-Manitowoc, UW-Sheboygan, and UW-Washington County.

## ENGINEERING, ARCHITECTURE & APPLIED TECH

	UW-EAU CLAIRE	UW-GREEN BAY	UW-LA CROSSE	UW-MADISON	UW-MILWAUKEE	UW-OSHKOSH	UW-PARKSIDE	UW-PLATTEVILLE	UW-RIVER FALLS	UW-STEVENS POINT	UW-STOUT	UW-SUPERIOR	UW-WHITEWATER
Architectural Studies				M									
Biological Systems Engineering			M										
Biomedical Engineering			M	M						S			
Chemical Engineering			M						M				
Chemistry-Engineering Dual Degree		4						5					
Civil Engineering			M	M			M						
Computer Engineering			M	M						M			
Computer Sci-Engineer Dual Degree		4											
Construction			S							M			+
Electrical Engineering			M	M				6		S			
Electrical Engineering Tech	M				M								
Engineering Mechanics			M							S			
Engineering Physics			M				M						
Engineering Technology										M			
Environmental Engineering			S				M						
Environmental Engineering Tech	M				M			S					
Geological Engineering	5		M										
Industrial Engineering			M	M			M						
Industrial Technology Management							M			S			
Interior Architecture/Design			M						M	M			
Landscape Architecture/Design			M										
Manufacturing Engineering			S							M			
Materials Engineering					M					S			
Materials Science & Engineering	M		M							S			
Math-Engineering Dual Degree		4											
Mechanical Engineering			M	M			6			M			
Mechanical Engineering Tech	M				M								
Nuclear Engineering			M										
Occupational/Environ Safety & Health										S			+
Packaging										M			
Paper Science & Engineering										M			
Physics-Engineering Dual Degree	5	5	5	M	5			5					S
Plastics Engineering										M			
Software Engineering	S				S		M			S			
Urban Planning	S		S	M				S					S

- 4 (Chemistry-Engineering Dual Degree; Computer Sci-Engineer Dual Degree; Math-Engineering Dual Degree) Student attends UW-L for 3 years and UW-Madison for 2 years to earn a Chem, Comp Sci, or Math degree from UW-L and an Engineering degree from UW-Madison.
- 5 (Chemistry-Engineering Dual Degree; Geological Engineering; Physics-Engineering Dual Degree) A student must attend two separate campuses to obtain the dual degree.
- 6 (Electrical Engineering; Mechanical Engineering) UW-Platteville degree program also available at UW-Fox Valley, UW-Sheboygan, and UW-Washington County.

## FAMILY & CONSUMER RESOURCES

	UW-EAU CLAIRE	UW-GREEN BAY	UW-LA CROSSE	UW-MADISON	UW-MILWAUKEE	UW-OSHKOSH	UW-PARKSIDE	UW-PLATTEVILLE	UW-RIVER FALLS	UW-STEVENS POINT	UW-STOUT	UW-SUPERIOR	UW-WHITEWATER
Apparel/Fashion/Textile Design & Dev				M							M		
Community & Nonprofit Leadership				M									
Gerontology	S	S	S	S	S	S	S	S	S	S	S	S	S
Human Development & Family Studies	S	M	S	M						+	M		S
Personal Finance				M									

## FINE & APPLIED ARTS

	UW-EAU CLAIRE	UW-GREEN BAY	UW-LA CROSSE	UW-MADISON	UW-MILWAUKEE	UW-OSHKOSH	UW-PARKSIDE	UW-PLATTEVILLE	UW-RIVER FALLS	UW-STEVENS POINT	UW-STOUT	UW-SUPERIOR	UW-WHITEWATER
Art History/Criticism	S			M	M		S			S	S	S	S
Art/Visual Arts	+	+	+	M	M	+	M	+	M	M	M	M	+
Arts Management			M	S						M			S
Dance	S		+	+						M			+
Design Arts	M												
Entertainment Design												M	
Film					M				+	S			
Film Studies					M	S		S					S
Fine Arts	M				+		+	M		M			+
Graphic Design & Interactive Media				S	S	M	S		S	M			S
Industrial Design											M		
Inter - Arts					M								
Interior Architecture/Design				M						M	M		
Music	+	+	+	M	M	+	M	+	+	M		+	+
Music Literature		S								M			
Music Performance	S	S	S	M	S	S	S		M	M	S	S	S
Music Theory	S	S	S										S
Music, General	+	+	+		S			+	M	M			
Musical Theatre	S	S	S	S					S	S			
Photography	S	S	S							S	S		
Theatre Design/Technical	S	S							+	S			S
Theatre/Drama	+	M	M	M	+	+	M	+	+	M	S	M	+
Web, Digital Media & Game Devt	S				S		S			M	M		M

## KEY

- M** Major (primary area of study)
- +** Major plus optional teacher certification
- S** Submajor (secondary area of study)
- +** Submajor plus optional teacher certification
- \*** Associate degree

**Note:** Academic programs in this chart are grouped into categories; official names might differ. Consult campus admissions offices and websites for complete information. Not all submajors are displayed.



## FOREIGN LANGUAGES & LITERATURE

	UW-EAU CLAIRE	UW-GREEN BAY	UW-LA CROSSE	UW-MADISON	UW-MILWAUKEE	UW-OSHKOSH	UW-PARKSIDE	UW-PLATTEVILLE	UW-RIVER FALLS	UW-STEVENS POINT	UW-STOUT	UW-SUPERIOR	UW-WHITEWATER
African Cultural Studies				M									
Chinese				+	S								
Classical Humanities				M									
Classics				M	M								
Comparative Literature					M			S	S				
Comparative Literature & Folklore Studies				M									
French/French Studies	+	+	+	+	+	+	S	+		+			+
German/German Studies	+	+	+	+	M	+	S	+		+			+
Italian				+	M								
Japanese	S			+	S	S							
Latin				+	S								
Linguistics	S	S	M	M	S								
Modern Languages									+				
Polish				M									
Portuguese				+									
Russian				M	+								
Spanish	+	+	+	+	+	+	M	+	S	+	S		+
Spanish & Latin American Studies		+											

## HEALTH-RELATED STUDIES

	UW-EAU CLAIRE	UW-GREEN BAY	UW-LA CROSSE	UW-MADISON	UW-MILWAUKEE	UW-OSHKOSH	UW-PARKSIDE	UW-PLATTEVILLE	UW-RIVER FALLS	UW-STEVENS POINT	UW-STOUT	UW-SUPERIOR	UW-WHITEWATER
Applied Health Sciences							M						
Art Therapy													S
Athletic Training	M	7	M	7	7				7				
Biomedical Science	S	S		S	S				S				
Communication Sciences & Disorders	+			+	M				+	M			+
Cytotechnology	S	S	S					S	S				
Dietetics	S	S								M	M		
Environmental Health	M				M							S	
Exercise/Sport Science	S	+	S	S	S	M		S	S	+			
Fitness Management			S		S	S				+			
Health & Human Performance					S			+	+	M		S	
Health & Wellness Management (8)		M							M	M	S	M	
Health Care Administration	M			M	S					S			
Health Information Mgmt & Tech (8)		M	M			M				M			
Health Promotion/Wellness								S		M	+	S	S
Health Science	M	S			S					M			
Health, Wellness & Fitness											M		S
Imaging					M								
Kinesiology	+		+	M	M								
Medical Technology/Clinical Lab Sci			M	M	M					M			
Neurobiology				M									
Neuroscience	S					S		M		S			
Nuclear Medicine Technology		M											
Nursing	M	9		M	M	M	10			9			
Nursing (BSN@Home) (8)	M	M		M	M	M				M			
Occupational Studies				M									
Public Health & Community Health Ed			M										
Radiation Therapy			M										
Rehabilitation Psychology/Services				M							M		
Sport Management			S			M							S
Therapeutic Recreation		M	S										

## INTERDISCIPLINARY STUDIES

	UW-EAU CLAIRE	UW-GREEN BAY	UW-LA CROSSE	UW-MADISON	UW-MILWAUKEE	UW-OSHKOSH	UW-PARKSIDE	UW-PLATTEVILLE	UW-RIVER FALLS	UW-STEVENS POINT	UW-STOUT	UW-SUPERIOR	UW-WHITEWATER
American Studies			S							M			
Applied Arts & Sciences (11)													
Applied Science									M		M		
Associate Degree (12)	*	*	*				*	*	*	*	*	*	*
Humanities	M						S						
Individually Planned Major	M			M	M	M		M		M		M	
Integrative Leadership Studies	M												
Leadership & Organizational Studies (8)						M							
Liberal Studies	M		S		13	M							13
Organizational Administration					M								
Sustainable & Renewable Energy Sys								M					
Sustainable Management (8)						S	M		M		M	M	

- 7 (Athletic Training) The profession is moving to a master's degree. This campus no longer admits bachelor-level students.
- 8 An associate degree is required before admission to this major.
- 9 (Nursing) Nursing degree completion program for qualified registered nurses.
- 10 (Nursing) UW-Milwaukee degree program available at UW-Parkside.
- 11 (Applied Arts & Sciences) Bachelor's degree program available at UW-Baraboo/Sauk County, UW-Barron County, UW-Marshfield/Wood County, UW-Richland, UW-Rock County, and UW-Waukesha.
- 12 Associate degree also available through each UW Colleges campus.
- 13 (Liberal Studies) UW-Oshkosh degree program with an emphasis in organizational administration also available at UW-Baraboo/Sauk County, UW-Fond du Lac, UW-Fox Valley, UW-Manitowoc, UW-Sheboygan, UW-Washington County, and UW-Waukesha. UW-Whitewater degree program also available at UW-Rock County.



## MATH, COMPUTER & INFORMATION SCIENCES

	OW-EAU CLAIRE	OW-GREEN BAY	OW-LA CROSSE	OW-MADISON	OW-MILWAUKEE	OW-OSHKOSH	OW-PARKSIDE	OW-PLATTEVILLE	OW-RIVER FALLS	OW-STEVENS POINT	OW-STOUT	OW-SUPERIOR	OW-WHITEWATER
Applied Math & Computer Science				M						+		S	
Applied Math, Engineering & Physics			M										
Computational Science			S										
Computer Information Systems							S	M	M	M			
Computer Networking & Info Tech											M		
Computer Science(s)	M	+	+	M	+	+	M	M	M		+	M	M
Data Analytics									M				
Data Science								M					
Digital Marketing Technology											M		
Information & Communication Tech											M		
Interactive Web Management					M								
Library Science/Educational Media				S	+								+
Mathematics	+	+	+	M	+	+	+	+	+	+	+	+	+
Operations Research					S								
Statistics	S	M	M	S									S
Web, Digital Media & Game Dev't	S			S	S				M	M			M

## PUBLIC AFFAIRS & SERVICE

	OW-EAU CLAIRE	OW-GREEN BAY	OW-LA CROSSE	OW-MADISON	OW-MILWAUKEE	OW-OSHKOSH	OW-PARKSIDE	OW-PLATTEVILLE	OW-RIVER FALLS	OW-STEVENS POINT	OW-STOUT	OW-SUPERIOR	OW-WHITEWATER
Criminal Justice	M		S	S	M	M	M	M	M	M	S	M	
Environmental Law Enforcement								S	S				
Fire & Emergency Response Mgt (8)					M								
Forensic Investigation				S			M						
Legal Studies	S	S	M	S	S	S					M	S	
Military Science (ROTC)	S	S	S	S	S			S	S	S	S	S	
Naval Science (ROTC)			M										
Paralegal													S
Public Administration/Policy	M	M		S								M	
Recreation Management		M											S

## SOCIAL SCIENCES

	OW-EAU CLAIRE	OW-GREEN BAY	OW-LA CROSSE	OW-MADISON	OW-MILWAUKEE	OW-OSHKOSH	OW-PARKSIDE	OW-PLATTEVILLE	OW-RIVER FALLS	OW-STEVENS POINT	OW-STOUT	OW-SUPERIOR	OW-WHITEWATER
Anthropology			S	M	+	M	S		+	S	S		S
Applied Social Science											M		
Archeological Studies			M	S									
Cartography & Geographic Info Sys			S	M					S	S	S		
Community & Environmental Sociology				M									
Democracy & Justice Studies	M												
Economics	+	+	M	M	+	M	M		M	+	+	M	+
Geography	+	+	+	M	+	+	+	+	M	+			+
Geospatial Analysis & Technology	M												
Global Security & Amer Foreign Policy				S	S								
History	+	+	+	M	+	+	+	+	M	+	S	+	+
Human Development & Family Studies	S	M	S	M						+	M		S
Human Services Leadership						M	S	S					
Political Science	+	+	+	M	+	+	+	M	M	+		M	+
Psychology	M	+	M	M	+	M	M	M	M	+	M	M	+
Social Studies/Science	+		+			+	+	+	+	+	M	+	+
Social Welfare				M									
Social Work	M	M	M	M	M				M	M	S	M	M
Sociology	+		+	M	+	M	+	S	M	+	S	M	M
Urban & Regional Studies	M				S								S
World Politics	S					S							

## KEY

- M** Major (primary area of study)
- +** Major plus optional teacher certification
- S** Submajor (secondary area of study)
- +** Submajor plus optional teacher certification
- \*** Associate degree

**Note:** Academic programs in this chart are grouped into categories; official names might differ. Consult campus admissions offices and websites for complete information. Not all submajors are displayed.







# PAYING FOR COLLEGE



## FINANCIAL AID

Sixty-seven percent of all UW System students receive some form of financial aid. The federal government, state of Wisconsin, outside scholarship sources, and UW System campuses all provide financial aid. Aid is based on financial need and is designed to help meet the difference between the cost of college and your family's ability to pay. Talk to your school counselor or to the financial aid office staff at any campus.

### 4 FORMS OF FINANCIAL AID

**GRANTS** are awarded on the basis of financial need and don't require repayment.

**SCHOLARSHIPS** are awarded on the basis of financial need or academic merit and don't require repayment.

**LOANS** must be repaid.

**STUDENT EMPLOYMENT** is offered through work-study or other on-campus employment.

## HOW DO I APPLY FOR FINANCIAL AID?

To apply for financial aid, including loans, you must complete the Free Application for Federal Student Aid (FAFSA). This form is the basis for determining your financial aid package. Each campus may offer a package that includes a combination of grants, loans, work-study, and scholarships.

**To start, go to [FAFSA.gov](https://fafsa.gov).**

The 2018–19 FAFSA becomes available October 1, 2017.

## DEADLINES MATTER

At most UW campuses, the deadline for priority consideration of financial aid requests is between November 1 and early March for the upcoming academic year. Exact dates are available from the campus financial aid office.



## TUITION, FEES, AND TUITION AGREEMENTS

Tuition and fees vary among the UW System campuses. Fees cover expenses like health services, student activities, and organizations. At some campuses the fee also includes textbook rental. Visit [uwhelp.wisconsin.edu/pay-for-college/about-financial-aid](https://uwhelp.wisconsin.edu/pay-for-college/about-financial-aid) for details. Wisconsin residents pay less for tuition and fees at UW System campuses than students from other states. Wisconsin residents pay about 69 percent of the cost of their education, and Wisconsin taxpayers pay the rest.

Minnesota and Wisconsin have a tuition reciprocity agreement. The agreement allows residents of one state to attend a public college in the other as a resident student for tuition purposes.

Some UW System campuses participate in other nonresident tuition-reduction programs. Two programs, Return to Wisconsin and the Midwest Student Exchange Program, offer discounts on nonresident tuition for qualified residents from other states.

## PAYING FOR COLLEGE INVOLVES 3 SOURCES

WORK / INDIVIDUAL CONTRIBUTION / FINANCIAL AID

Most students pay part of the cost, depending on circumstances.

Visit [uwhelp.wisconsin.edu/pay-for-college/about-financial-aid](https://uwhelp.wisconsin.edu/pay-for-college/about-financial-aid) or contact the financial aid office (see pages 44–45) for more information about specific types of financial aid.



ACADEMIC YEAR 2018–2019

## UW SYSTEM COSTS

Visit [uwhelp.wisconsin.edu/pay-for-college/tuition-costs](http://uwhelp.wisconsin.edu/pay-for-college/tuition-costs) for the most up-to-date tuition and fees information. You can also get tuition and student budget data from the financial aid office at the campus you're interested in attending (see pages 44–45).

## RESERVE OFFICERS' TRAINING CORPS (ROTC)

ROTC programs offer students an opportunity to receive military training and experience. Scholarships and monthly stipends are also available to students who participate in Army, Air Force, or Navy-Marine ROTC programs. Visit [uwhelp.wisconsin.edu/resources/rotc-and-military](http://uwhelp.wisconsin.edu/resources/rotc-and-military) for more information.

## GET HELP

You're not alone as you go through the financial aid process. Financial aid officers are happy to assist you and your family with finding ways to finance your college education. It may take creative thinking and hard work, but it's worth the effort.

## SCHOLARSHIPS

All campuses offer scholarships for incoming freshmen. Apply early for admission, because students must be admitted before being offered scholarships. Qualifications vary. Check out [uwhelp.wisconsin.edu/pay-for-college](http://uwhelp.wisconsin.edu/pay-for-college) for specifics.

## WHAT SHOULD I BUDGET FOR?

TUITION AND FEES

ON-CAMPUS HOUSING

MEALS

TEXTBOOKS AND SUPPLIES

TRAVEL AND PARKING

CLOTHING, RECREATION,  
AND PERSONAL ITEMS

LIVING COSTS



# WHO'S ON CAMPUS

## UNDERGRADUATE STUDENT BODY

	UW COLLEGES	UW-EAU CLAIRE	UW-GREEN BAY	UW-LA CROSSE	UW-MADISON	UW-MILWAUKEE	UW-OSHKOSH	UW-PARKSIDE	UW-PLATTEVILLE	UW-RIVER FALLS	UW-STEVENS POINT	UW-STOUT	UW-SUPERIOR	UW-WHITEWATER
Undergraduate headcount enrollment - fall 2016	9,814	9,858	5,502	9,474	29,253	20,000	9,529	4,154	7,731	5,330	8,170	8,178	2,257	10,775
% of enrollment that is undergraduate	100%	94%	96%	92%	72%	82%	89%	97%	90%	92%	97%	90%	95%	90%
% of undergraduates who are:														
Part-time	42%	6%	28%	4%	5%	13%	14%	22%	10%	11%	6%	17%	20%	7%
Over age 24	17%	6%	30%	4%	3%	20%	16%	23%	9%	10%	10%	16%	30%	8%
Women	53%	62%	67%	56%	51%	51%	58%	52%	34%	61%	53%	45%	61%	49%
Students of color	17%	9%	13%	10%	16%	29%	14%	31%	9%	10%	12%	10%	11%	17%
Living on campus	2%	41%	34%	35%	26%	19%	30%	18%	38%	44%	38%	37%	36%	40%

Degree-seeking students only. Excludes special students.

## NEW FRESHMEN

	UW COLLEGES	UW-EAU CLAIRE	UW-GREEN BAY	UW-LA CROSSE	UW-MADISON	UW-MILWAUKEE	UW-OSHKOSH	UW-PARKSIDE	UW-PLATTEVILLE	UW-RIVER FALLS	UW-STEVENS POINT	UW-STOUT	UW-SUPERIOR	UW-WHITEWATER
Number of new freshmen - fall 2016	3,195	2,318	872	2,093	6,430	3,118	1,501	666	1,561	1,219	1,591	1,588	376	2,220
% of new freshmen who are:														
Wisconsin residents	95%	69%	90%	81%	57%	84%	89%	85%	78%	46%	87%	62%	41%	81%
Minnesota residents	0%	28%	3%	14%	10%	2%	1%	0%	1%	50%	3%	32%	41%	1%
Students of other states or countries	5%	3%	8%	5%	33%	14%	11%	15%	20%	4%	10%	6%	17%	18%
Average ACT score of new freshmen	20.4	24.5	22.5	24.7	27.9	22.0	22.5	20.2	22.2	21.9	22.8	21.4	22.0	22.2
% of new freshmen who graduated:														
In top 10% of high school class	4%	15%	**	21%	53%	9%	9%	10%	13%	13%	11%	8%	6%	9%
In top 25% of high school class	18%	47%	**	58%	88%	28%	34%	34%	38%	36%	37%	28%	23%	29%
In top half of high school class	49%	89%	**	95%	100%	67%	75%	73%	75%	73%	73%	64%	59%	74%

\*\*High school rank information is not shown for UW-Green Bay because the campus does not require applicants to submit high school rank.

## BACHELOR'S DEGREES, INSTRUCTORS, AND CLASS SIZE

	UW COLLEGES	UW-EAU CLAIRE	UW-GREEN BAY	UW-LA CROSSE	UW-MADISON	UW-MILWAUKEE	UW-OSHKOSH	UW-PARKSIDE	UW-PLATTEVILLE	UW-RIVER FALLS	UW-STEVENS POINT	UW-STOUT	UW-SUPERIOR	UW-WHITEWATER
Bachelor's degrees awarded in 2015-16	18	2,127	1,285	1,869	6,919	3,900	1,945	691	1,399	1,165	1,909	1,614	441	2,207
% of new freshmen graduating with bachelor's degree from same institution*		68%	49%	68%	85%	40%	53%	24%	54%	54%	63%	54%	43%	57%
% graduating from another UW institution*		7%	10%	10%	2%	5%	8%	7%	5%	4%	9%	5%	6%	6%
% enrolled for a 7th year at any UW*		2%	4%	3%	2%	8%	6%	7%	5%	3%	3%	3%	4%	4%
Percent of undergraduate course enrollments taught by:														
Regular faculty	49%	67%	60%	66%	41%	31%	52%	57%	60%	64%	77%	58%	66%	52%
Other instructional academic staff	50%	32%	38%	34%	33%	54%	46%	43%	40%	36%	23%	41%	34%	47%
Teaching assistants	na	na	na	na	10%	11%	na	na	na	na	na	na	na	na
Combinations of two or three staff types	0%	1%	2%	0%	17%	5%	3%	0%	0%	1%	1%	1%	0%	1%
Average undergraduate class size	18	31	29	27	30	26	26	24	26	27	27	24	16	27

\* Includes only new freshmen who began full time in fall 2010.

# CAMPUS CONTACTS

## UW COLLEGES (freshman/sophomore campuses)

780 Regent St., Madison, WI 53715-2635  
UWCSolutionCenter@uwec.edu | uwec.edu

Admissions	see pp. 4–5 for listings	
Financial Aid		608-262-5928
Multicultural Students	Kelly Thomas	608-890-3472
Students with Disabilities	Kristin Hoffmann	262-524-3957
Veterans Services	uwec.edu/students/veterans	

## UW-EAU CLAIRE

105 Garfield Ave., Eau Claire, WI 54701  
admissions@uwec.edu | uwec.edu/admissions

Admissions	Heather Kretz	715-836-5415
Financial Aid	Blugold Central	715-836-3000
Housing	Quincy Chapman	715-836-3674
Multicultural Students	Blugold Beginnings	715-836-3015
	Kia Lee	715-836-5415
Students with Disabilities	Vicki Thomas	715-836-5800
Veterans Services	Phil Huelsbeck	715-836-5400

## UW-GREEN BAY

2420 Nicolet Dr., Green Bay, WI 54311-7001  
uwgb@uwgb.edu | uwgb.edu/admissions

Admissions	Jennifer Jones	920-465-2111
Financial Aid	Jim Rohan	920-465-2075
Housing	Gail Sims-Aubert	920-465-2040
Multicultural Students	Mai Lo Lee	920-465-2720
Students with Disabilities	Lynn Niemi	920-465-2841
Veterans Services	Elaina Koltz	920-465-2065

## UW-LA CROSSE

1725 State St., La Crosse, WI 54601-3742  
admissions@uwlax.edu | uwlax.edu/admissions

Admissions	Corey Sjoquist	608-785-8939
Financial Aid	Louise Janke	608-785-8604
Housing	Jacque Bollinger	608-785-8075
Multicultural Students	Antoiwana Williams	608-785-8225
Students with Disabilities	Jennifer Bell	608-785-6900
Veterans Services	Kevin Leque	608-785-8631

## UW-MADISON

702 W. Johnson St., Suite 1101, Madison, WI 53715-1007  
onwisconsin@admissions.wisc.edu | admissions.wisc.edu

Admissions	André E. Phillips	608-262-3961
Financial Aid	Derek Kindle	608-262-3060
Housing	Jeffrey Novak	608-262-2522
Multicultural Students	Gabe Javier	608-262-4503
Students with Disabilities	Mari Magler	608-263-2741
	Text, 711 Relay	608-225-7956
Veterans Services	John Bechtol	608-265-4628

## UW-MILWAUKEE

P.O. Box 749, Milwaukee, WI 53201-0749  
undergraduateadmissions@uwm.edu | uwm.edu/admissions

Admissions		414-229-2222
Financial Aid	Tim Oppenorth	414-229-4541
High School Relations	Tawney Latona	414-229-4624
Housing	Kelly Haag	414-229-4065
Multicultural Students	Mariana Sanabria	414-229-3854
Students with Disabilities	Barb Simon	414-229-6287
Veterans Services	Jayne Holland	414-229-7211

## UW-OSHKOSH

P.O. Box 2423, Oshkosh, WI 54903-2423  
admissions@uwosh.edu | admissions.uwosh.edu

Admissions	Paul Gedlinske	920-424-3164
Financial Aid	Kim Donat	920-424-3377
Housing	Tom Fojtik	920-424-3212
Multicultural Students	Sylvia Carey-Butler	920-424-3080
Students with Disabilities	Dean of Students	920-424-3100
Veterans Resource Center		920-424-1804

## UW-PARKSIDE

900 Wood Rd., P.O. Box 2000, Kenosha, WI 53141-2000  
admissions@uwp.edu | uwp.edu/admissions

Admissions	Troy Moldenhauer	262-595-2355
Financial Aid	Kristina Klemens	262-595-2574
Housing	Joe Berthiaume	262-595-2320
Multicultural Students	Damian Evans	262-595-2731
Students with Disabilities	Renee Kirby	262-595-2372
Veterans Services	Lisa Giampaolo	262-595-2497



## UW-PLATTEVILLE

1 University Plaza, Platteville, WI 53818-3099  
[admit@uwplatt.edu](mailto:admit@uwplatt.edu) | [uwplatt.edu/admission](http://uwplatt.edu/admission)

Admissions	Heidi Tuescher-Gille	608-342-1125 877-897-5288
Financial Aid	Brian Bird	800-616-0412
Housing	Linda Mulroy-Bowden	608-342-1845
Multicultural Students	Angela Miller	608-342-1555
Students with Disabilities	Brenda Sunderdandce	608-342-1818
Veterans Affairs		608-342-7351

## UW-RIVER FALLS

410 S. Third St., River Falls, WI 54022-5001  
[admissions@uwrf.edu](mailto:admissions@uwrf.edu) | [uwrf.edu/admissions](http://uwrf.edu/admissions)

Admissions	Sarah Egerstrom	715-425-3500
Financial Aid	Robert Bode	715-425-3141
Housing	Karla Thoennes	715-425-4555
Multicultural Students	Pedro Renta	715-425-3500
Students with Disabilities	Mark Johnson	715-425-0740
Veterans Services	Tadd Heichel	715-425-3529

## UW-STEVENS POINT

1108 Fremont St., Stevens Point, WI 54481-3897  
[admiss@uwsp.edu](mailto:admiss@uwsp.edu) | [www.uwsp.edu/admissions](http://www.uwsp.edu/admissions)

Admissions	Bill Jordan	715-346-2441
Financial Aid	Mandy Slowinski	715-346-4771
Housing	Brian Faust	715-346-3511
Multicultural Students	Laurie Graboski-Bauer	715-346-4737
Students with Disabilities	Susie Rood	715-346-3365
Veterans Services	Ann Whipp	715-346-3237

## UW-STOUT

212 Millennium Hall, 121 10th Ave. East, Menomonie, WI 54751  
[admissions@uwstout.edu](mailto:admissions@uwstout.edu) | [admissions.uwstout.edu](http://admissions.uwstout.edu)

Admissions	Joel Helms	715-232-1232
Financial Aid	Beth Boisen	715-232-1363
Housing	Sandi Scott Duex	715-232-1121
Multicultural Students	Barbara Miller	715-232-1381
Students with Disabilities	Kara James	715-232-2995
Veterans Services	Sarah Godsave	715-232-1659

## UW-SUPERIOR

P.O. Box 2000, Superior, WI 54880-4500  
[admissions@uwsuper.edu](mailto:admissions@uwsuper.edu) | [uwsuper.edu/admissions](http://uwsuper.edu/admissions)

Admissions	Jeremy Nere	715-394-8230
Financial Aid	Donna Dahlvang	715-394-8200
Housing	Ryan Kreuser	715-394-8438
Multicultural Students	Gabriela Theis	715-394-8084
Students with Disabilities	Toua Thao	715-394-8188
Veterans Affairs	Monte Stewart	715-394-8406

## UW-WHITEWATER

800 W. Main St., Whitewater, WI 53190-1791  
[uwwadmit@uww.edu](mailto:uwwadmit@uww.edu) | [uww.edu/admissions](http://uww.edu/admissions)

Admissions	Rob Gambsky	262-472-1440
Financial Aid	Carol Miller	262-472-1130
Housing	Frank Bartlett	262-472-4255
Multicultural Students	LaVar Charleston	262-472-4985
Students with Disabilities	Elizabeth Watson	262-472-4711
Veterans Services	Janice Nordin	262-472-1580

## UW-EXTENSION

432 N. Lake St., Madison, WI 53706-1498  
[uwhelp@uwex.edu](mailto:uwhelp@uwex.edu) | [uwex.edu](http://uwex.edu)

UW HELP		800-442-6459
Inclusion	Kelly Thomas	608-890-3472
Students with Disabilities	Kelly Thomas	608-890-3472
Veterans Services	Carolyn Stegmann	608-262-2011

*The information in this booklet is subject to change.  
 This document can be obtained in an alternative format  
 by calling UW HELP at 800-442-6459.*

AA/EOE







# START YOUR JOURNEY

APPLY.WISCONSIN.EDU



 FOUR-YEAR CAMPUSES

 TWO-YEAR CAMPUSES

STATEWIDE:  
UW COLLEGES ONLINE  
UW-EXTENSION



DOWNLOAD OUR FREE MOBILE APP



# UWJOURNEY.WISCONSIN.EDU